

# Biotinylated Rabbit anti-Human S100A8/A9 mAb

**Catalog No.:** RMK0620B

## Basic Information

**Catalog No.**  
RMK0620B

**Catagory**  
Elisa Antibody Kit

**Application**  
ELISA

## Product Information

**Ig Type**  
Rabbit IgG

**Purification**  
Affinity purification

**Endotoxin Level**  
N/A

**Storage**  
Store at -20°C.  
**Avoid repeated freeze-thaw cycles.**

**Formulation**  
Supplied as a 0.2 µm filtered solution in PBS with 0.05% Proclin 300, pH 7.3.

## Contact

 | [order@abclonal.com](mailto:order@abclonal.com)

 | [support@abclonal.com](mailto:support@abclonal.com)

 | [www.abclonal.com](http://www.abclonal.com)

## Background

The protein encoded by this gene is a member of the S100 family of proteins containing 2 EF-hand calcium-binding motifs. S100 proteins are localized in the cytoplasm and/or nucleus of a wide range of cells, and involved in the regulation of a number of cellular processes such as cell cycle progression and differentiation. S100 genes include at least 13 members which are located as a cluster on chromosome 1q21. This protein may function in the inhibition of casein kinase and as a cytokine. Altered expression of this protein is associated with the disease cystic fibrosis. Multiple transcript variants encoding different isoforms have been found for this gene.

## Immunogen Information

**Immunogen**  
Recombinant Human S100A8/A9 protein

## Cross-Reactivity

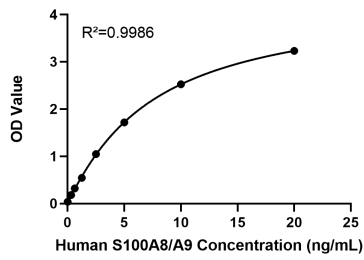
Human

## Assay Applications

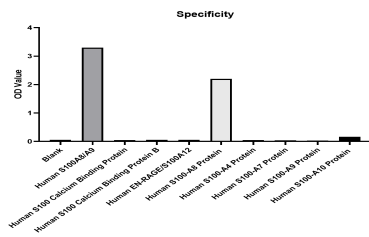
Human S100A8/A9 Sandwich Immunoassay

		Recommended Concentration	Sample
ELISA	Capture	0.1-0.4 µg/mL	Rabbit anti-Human S100A8/A9 mAb (Cat. No. RMK0619)
	Detection	0.005-0.004 µg/mL	Rabbit anti-Human S100A8/A9 mAb (Cat. No. RMK0620)
	Standard	0.3125-20 ng/mL	Recombinant Human S100A8/A9 protein

## Validation Data



This standard curve is only for demonstration purposes. A standard curve should be generated for each assay.



No significant cross-reactivity or interference was observed.