

Rabbit anti-Human S100A8/A9 mAb

Catalog No.: RMK0619

Basic Information

Catalog No.
RMK0619

Catagory
Elisa Antibody Kit

Application
ELISA

Product Information

Ig Type
Rabbit IgG

Purification
Affinity purification

Endotoxin Level
N/A

Storage
Store at -20°C.
Avoid repeated freeze-thaw cycles.

Formulation
Supplied as a 0.2 µm filtered solution in PBS with 0.05% Proclin 300, pH 7.3.

Contact

 | order@abclonal.com

 | support@abclonal.com

 | www.abclonal.com

Background

The protein encoded by this gene is a member of the S100 family of proteins containing 2 EF-hand calcium-binding motifs. S100 proteins are localized in the cytoplasm and/or nucleus of a wide range of cells, and involved in the regulation of a number of cellular processes such as cell cycle progression and differentiation. S100 genes include at least 13 members which are located as a cluster on chromosome 1q21. This protein may function in the inhibition of casein kinase and as a cytokine. Altered expression of this protein is associated with the disease cystic fibrosis. Multiple transcript variants encoding different isoforms have been found for this gene.

Immunogen Information

Immunogen
Recombinant Human S100A8/A9 protein

Cross-Reactivity

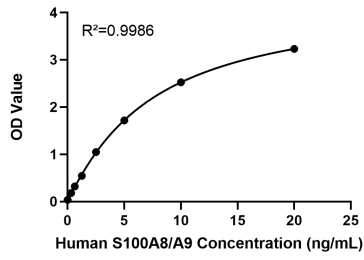
Human

Assay Applications

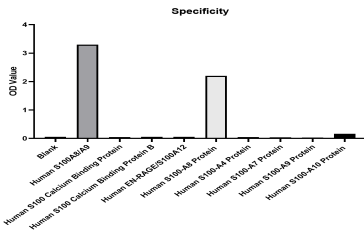
Human S100A8/A9 Sandwich Immunoassay

		Recommended Concentration	Sample
ELISA	Capture	0.1-0.4 µg/mL	Rabbit anti-Human S100A8/A9 mAb (Cat. No. RMK0619)
	Detection	0.005-0.004 µg/mL	Rabbit anti-Human S100A8/A9 mAb (Cat. No. RMK0620)
	Standard	0.3125-20 ng/mL	Recombinant Human S100A8/A9 protein

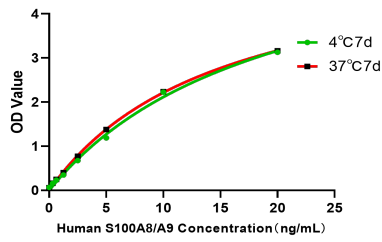
Validation Data



This standard curve is only for demonstration purposes. A standard curve should be generated for each assay.



No significant cross-reactivity or interference was observed.



Placed at 37°C for 7 days, the stability of the standard curve all conform to CV <10%.