

# Rabbit anti-Human IL-2 mAb

Catalog No.: RMK0517

## Basic Information

**Catalog No.**  
RMK0517

**Catagory**  
Elisa Antibody Kit

**Application**  
ELISA

## Product Information

**Ig Type**  
Rabbit IgG

**Purification**  
Affinity purification

**Endotoxin Level**

**Storage**  
Store at -20°C.  
**Avoid repeated freeze-thaw cycles.**

**Formulation**  
Supplied as a 0.2µm filtered solution in PBS with 0.05% Proclin300, PH 7.4.

## Contact

 | order@abclonal.com

 | support@abclonal.com

 | www.abclonal.com

## Background

This gene is a member of the interleukin 2 (IL2) cytokine subfamily which includes IL4, IL7, IL9, IL15, IL21, erythropoietin, and thrombopoietin. The protein encoded by this gene is a secreted cytokine produced by activated CD4+ and CD8+ T lymphocytes, that is important for the proliferation of T and B lymphocytes. The receptor of this cytokine (IL2R) is a heterotrimeric protein complex whose gamma chain is also shared by IL4 and IL7. The expression of this gene in mature thymocytes is monoallelic, which represents an unusual regulatory mode for controlling the precise expression of a single gene. The targeted disruption of a similar gene in mice leads to ulcerative colitis-like disease, which suggests an essential role of this gene in the immune response to antigenic stimuli.

## Immunogen Information

**Immunogen**  
Recombinant Human IL-2 protein

## Cross-Reactivity

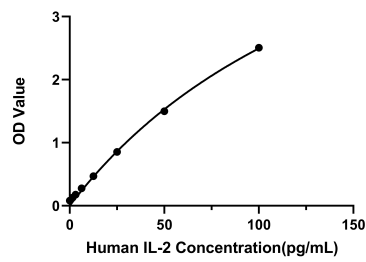
/

## Assay Applications

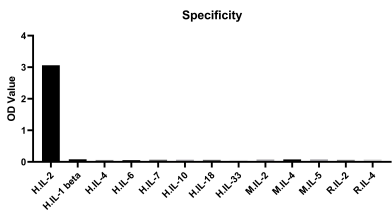
Human IL-2 Sandwich Immunoassay

		Recommended Concentration	Sample
ELISA	Capture	1-4ug/mL	Rabbit anti-Human IL-2 mAb(Cat. No.RMK0516)
	Detection	0.05-0.2ug/mL	Rabbit anti-Human IL-2 mAb(Cat. No.RMK0517)
	Standard	1.56-100pg/mL	Recombinant Human IL-2 Protein(Cat. No.RP01039)

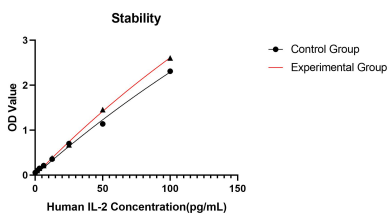
Validation Data



This standard curve is only for demonstration purposes. A standard curve should be generated for each assay.



No significant cross-reactivity or interference was observed.



Placed at 37°C for 7 days, the stability of the standard curve all conform to CV <10%.