

Rabbit anti-Human IL-1 beta mAb

Catalog No.: RMK0508

Basic Information

Catalog No.
RMK0508

Catagory
Elisa Antibody Kit

Application
ELISA

Product Information

Ig Type
Rabbit IgG


Purification
Affinity purification


Endotoxin Level

Storage
Store at -20°C.
Avoid repeated freeze-thaw cycles.

Formulation
Supplied as a 0.2µm filtered solution in PBS with 0.05% Proclin300, PH 7.4.

Contact

 | order@abclonal.com

 | support@abclonal.com

 | www.abclonal.com

Background

The protein encoded by this gene is a member of the interleukin 1 cytokine family. This cytokine is produced by activated macrophages as a proprotein, which is proteolytically processed to its active form by caspase 1 (CASP1/ICE). This cytokine is an important mediator of the inflammatory response, and is involved in a variety of cellular activities, including cell proliferation, differentiation, and apoptosis. The induction of cyclooxygenase-2 (PTGS2/COX2) by this cytokine in the central nervous system (CNS) is found to contribute to inflammatory pain hypersensitivity. Similarly, IL-1B has been implicated in human osteoarthritis pathogenesis. Patients with severe Coronavirus Disease 2019 (COVID-19) present elevated levels of pro-inflammatory cytokines such as IL-1B in bronchial alveolar lavage fluid samples. The lung damage induced by the Severe acute respiratory syndrome coronavirus 2 (SARS-CoV-2) is to a large extent, a result of the inflammatory response promoted by cytokines such as IL-1B. This gene and eight other interleukin 1 ...

Immunogen Information

Immunogen
Recombinant fusion protein containing a sequence corresponding to amino acids 117-269 of human IL1β (NP_000567.1).

Cross-Reactivity

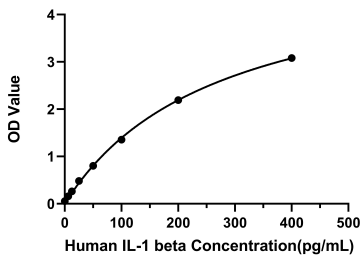
No cross-reactivity in ELISA with recombinant Human IL-1 alpha□ Human IL-2□ Human IL-6□ Human IL-7□ Human IL-8□ Human IL-13□ Human IL-18□ Human IL-33□ Mouse IL-1 alpha□ Mouse IL-1 beta□ Mouse IL-4□ Mouse IL-5□ Mouse IL-13□ Mouse IL-33□ Rat IL-1 alpha□ Rat IL-1 beta□ Rat IL-4□ Rat IL-6

Assay Applications

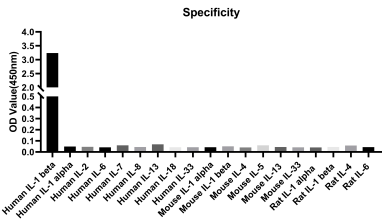
Human IL-1 beta Sandwich Immunoassay

| | | Recommended Concentration | Sample |
|-------|-----------|---------------------------|--|
| ELISA | Capture | 1-4ug/mL | Rabbit anti-Human IL-1 beta mAb(Cat. No.RMK0508) |
| | Detection | 0.025-0.1ug/mL | Rabbit anti-Human IL-1 beta mAb(Cat. No. RMK0034) |
| | Standard | 6.25-400pg/mL | Recombinant Human IL-1 beta Protein(Cat. No.RP00002) |

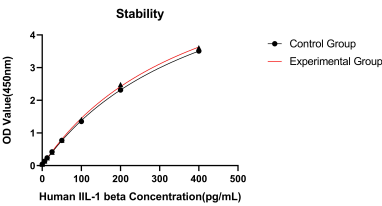
Validation Data



This standard curve is only for demonstration purposes. A standard curve should be generated for each assay.



No significant cross-reactivity or interference was observed.



Placed at 37°C for 7 days, the stability of the standard curve all conform to CV <10%.