

# Rabbit anti-Human Tau mAb

**Catalog No.:** RMK0456

## Basic Information

**Catalog No.**  
RMK0456

**Catagory**  
Elisa Antibody Kit

**Application**  
CLIA

## Product Information

**Ig Type**  
Rabbit IgG

**Purification**  
Affinity purification

**Endotoxin Level**

**Storage**  
Store at -20°C.  
**Avoid repeated freeze-thaw cycles.**

**Formulation**  
Supplied as a 0.2µm filtered solution in PBS with 0.05% Proclin300, PH 7.4.

## Contact

 | order@abclonal.com

 | support@abclonal.com

 | www.abclonal.com

## Background

This gene encodes the microtubule-associated protein tau (MAPT) whose transcript undergoes complex, regulated alternative splicing, giving rise to several mRNA species. MAPT transcripts are differentially expressed in the nervous system, depending on stage of neuronal maturation and neuron type. MAPT gene mutations have been associated with several neurodegenerative disorders such as Alzheimer's disease, Pick's disease, frontotemporal dementia, cortico-basal degeneration and progressive supranuclear palsy.

## Immunogen Information

**Immunogen**  
Recombinant Human Tau Protein.

## Cross-Reactivity

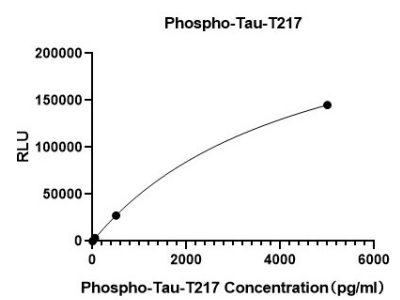
## Assay Applications

Human Phospho-Tau-217 Sandwich Immunoassay

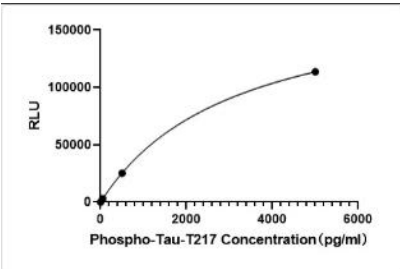
		Recommended Concentration	Sample
CLIA	Capture	1-4ug/mL	Rabbit anti-Human Phospho-Tau-T217 mAb(Cat. No.RMK0531)
	Detection	0.5-2ug/mL	Rabbit anti-Human Tau mAb(Cat. No.RMK0456)
	Standard	1-5000pg/mL	Recombinant Human Phospho-Tau-T217 Protein

CLIA	Capture	1-4ug/mL	Rabbit anti-Human Phospho-Tau-T217 mAb(Cat. No.RMK0532)
	Detection	0.5-2ug/mL	Rabbit anti-Human Tau mAb(Cat. No.RMK0456)
	Standard	1-5000pg/mL	Recombinant Human Phospho-Tau-T217 Protein
CLIA	Capture	1-4ug/mL	Rabbit anti-Human Phospho-Tau-T217 mAb(Cat. No.RMK0534)
	Detection	0.5-2ug/mL	Rabbit anti-Human Tau mAb(Cat. No.RMK0456)
	Standard	1-5000pg/mL	Recombinant Human Phospho-Tau-T217 Protein

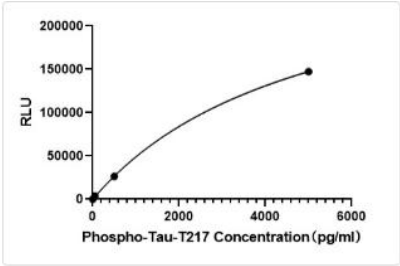
Validation Data



This standard curve is only for demonstration purposes. A standard curve should be generated for each assay.



This standard curve is only for demonstration purposes. A standard curve should be generated for each assay.



This standard curve is only for demonstration purposes. A standard curve should be generated for each assay.