

Rabbit anti-Human E-Selectin/SELE mAb

Catalog No.: RM98003

Basic Information

Catalog No.
RM98003

Category
Elisa Antibody Kit

Application
ELISA, Multiplex

Product Information

Ig Type
Rabbit IgG

Purification
Affinity purification

Endotoxin Level

Storage
Store at -20°C.
Avoid repeated freeze-thaw cycles.

Formulation
Supplied as a 0.2µm filtered solution in PBS with 0.05% Proclin300, PH 7.4.

Contact

 | order@abclonal.com

 | support@abclonal.com

 | www.abclonal.com

Background

The protein encoded by this gene is found in cytokine-stimulated endothelial cells and is thought to be responsible for the accumulation of blood leukocytes at sites of inflammation by mediating the adhesion of cells to the vascular lining. It exhibits structural features such as the presence of lectin- and EGF-like domains followed by short consensus repeat (SCR) domains that contain 6 conserved cysteine residues. These proteins are part of the selectin family of cell adhesion molecules. Adhesion molecules participate in the interaction between leukocytes and the endothelium and appear to be involved in the pathogenesis of atherosclerosis.

Immunogen Information

Immunogen
Recombinant Human E-Selectin/SELE Protein

Cross-Reactivity

/

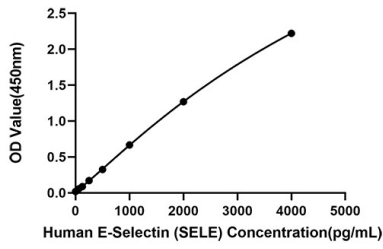
Assay Applications

E-Selectin/SELE Sandwich ELISA/Multiplex

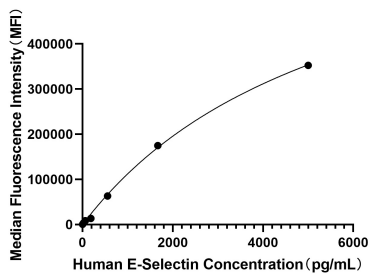
		Recommended Concentration	Sample
ELISA	Capture	1-4ug/mL	Rabbit anti-Human E-Selectin/SELE mAb(Cat. No.RM98002)
	Detection	0.34-1.3ug/mL	Rabbit anti-Human E-Selectin/SELE mAb(Cat. No.RM98003)
	Standard	62.5-4000pg/mL	Recombinant Human E-selectin/SELE/CD62E Protein(Cat. No.RP00293)

Multiplex	Capture	3-20ug/mL	Rabbit anti-Human E-Selectin/SELE mAb(Cat. No.RM98002)
	Detection	0.017-2ug/mL	Rabbit anti-Human E-Selectin/SELE mAb(Cat. No.RM98003)
	Standard	6.86-5000pg/mL	Recombinant Human E-selectin/SELE/CD62E Protein

Validation Data



This standard curve is only for demonstration purposes. A standard curve should be generated for each assay.



This standard curve is only for demonstration purposes. A standard curve should be generated for each assay.