

# Rabbit anti-Human ICAM-1 mAb(CAP)

**Catalog No.:** RM18057

## Basic Information

**Catalog No.**  
RM18057

**Catagory**  
Elisa Antibody Kit

**Application**  
ELISA

## Product Information

**Ig Type**  
Rabbit IgG


**Purification**  
Affinity purification

**Endotoxin Level**  
N/A

**Storage**  
Store at -20°C.  
**Avoid repeated freeze-thaw cycles.**

**Formulation**  
Supplied as a 0.2 µm filtered solution in PBS with 0.05% Proclin 300, pH 7.3.

## Contact

 | [order@abclonal.com](mailto:order@abclonal.com)

 | [support@abclonal.com](mailto:support@abclonal.com)

 | [www.abclonal.com](http://www.abclonal.com)

## Background

This gene encodes a cell surface glycoprotein which is typically expressed on endothelial cells and cells of the immune system. It binds to integrins of type CD11a / CD18, or CD11b / CD18 and is also exploited by Rhinovirus as a receptor.

## Immunogen Information

**Immunogen**  
Recombinant Human ICAM-1

## Cross-Reactivity

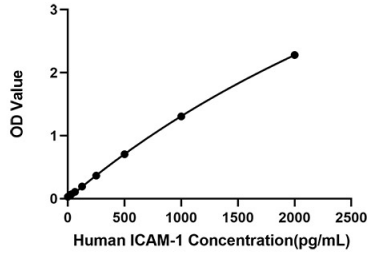
No cross-reactivity in ELISA assay with recombinant Human Galectin 1, Human sE-selectin, Human P-selectin, Human VCAM-1, Mouse VCAM-1.

## Assay Applications

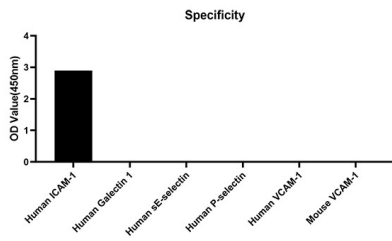
Human ICAM-1 Sandwich ELISA Immunoassay

	Recommended Concentration	Sample
ELISA Capture	1-4 µg/mL	Rabbit anti-Human ICAM-1 mAb (Cat. No. RM18057)
ELISA Detection	0.01-0.04 µg/mL	Rabbit anti-Human ICAM-1 mAb (Cat. No. RM18058)
Standard	31.25-2000 pg/mL	Recombinant Human ICAM-1 Protein

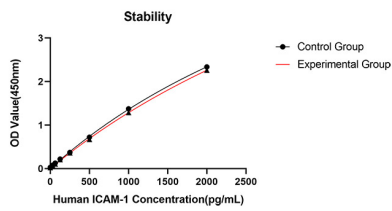
# Validation Data



This standard curve is only for demonstration purposes. A standard curve should be generated for each assay.



No significant cross-reactivity or interference was observed.



Placed at 37°C for 3 days, the stability of the standard curve all conform to CV <10%.