

# Rabbit anti-Human B7-1/CD80 mAb

**Catalog No.:** RM18039

## Basic Information

**Catalog No.**  
RM18039

**Catagory**  
Elisa Antibody Kit

**Application**  
ELISA,Multiplex

## Product Information

**Ig Type**  
Rabbit IgG


**Purification**  
Affinity purification

**Endotoxin Level**

**Storage**  
Store at -20°C.  
**Avoid repeated freeze-thaw cycles.**

**Formulation**  
Supplied as a 0.2µm filtered solution in PBS with 0.05% Proclin300, PH 7.4.

## Contact

 | order@abclonal.com

 | support@abclonal.com

 | www.abclonal.com

## Background

The protein encoded by this gene is a membrane receptor that is activated by the binding of CD28 or CTLA-4. The activated protein induces T-cell proliferation and cytokine production. This protein can act as a receptor for adenovirus subgroup B and may play a role in lupus neuropathy.

## Immunogen Information

**Immunogen**  
Recombinant Human CD80/B7-1

## Cross-Reactivity

/

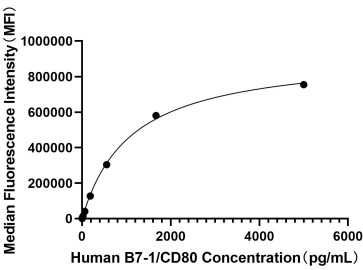
## Assay Applications

Human B7-1/CD80 Sandwich Immunoassay

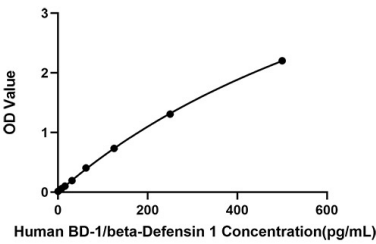
		Recommended Concentration	Sample
ELISA	Capture	1-4ug/mL	Rabbit anti-Human B7-1/CD80 mAb(Cat. No.RM18039)
	Detection	0.025-0.1ug/mL	Rabbit anti-Human B7-1/CD80 mAb(Cat. No.RM18040)
	Standard	46.88-3000pg/mL	Recombinant Human B7-1/CD80 Protein(Cat. No.RP00065)

Multiplex	Capture	3-20ug/mL	Rabbit anti-Human B7-1/CD80 mAb(Cat. No.RM18039)
	Detection	0.017-2ug/mL	Rabbit anti-Human B7-1/CD80 mAb(Cat. No.RMK0245)
	Standard	6.86-5000pg/mL	Recombinant Human B7-1/CD80 Protein

# Validation Data



This standard curve is only for demonstration purposes. A standard curve should be generated for each assay.



This standard curve is only for demonstration purposes. A standard curve should be generated for each assay.