

Rabbit anti-Human Tau mAb

Catalog No.: RM17960

Basic Information

Catalog No.
RM17960

Catagory
Elisa Antibody Kit

Application
CLIA

Product Information

Ig Type
Rabbit IgG

Purification
Affinity purification

Endotoxin Level

Storage
Store at -20°C.
Avoid repeated freeze-thaw cycles.

Formulation
Supplied as a 0.2µm filtered solution in PBS with 0.05% Proclin300, PH 7.4.

Contact

 | order@abclonal.com

 | support@abclonal.com

 | www.abclonal.com

Background

This gene encodes the microtubule-associated protein tau (MAPT) whose transcript undergoes complex, regulated alternative splicing, giving rise to several mRNA species. MAPT transcripts are differentially expressed in the nervous system, depending on stage of neuronal maturation and neuron type. MAPT gene mutations have been associated with several neurodegenerative disorders such as Alzheimer's disease, Pick's disease, frontotemporal dementia, cortico-basal degeneration and progressive supranuclear palsy.

Immunogen Information

Immunogen
Recombinant Human Human Tau Protein

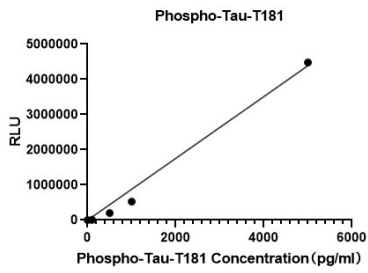
Cross-Reactivity

Assay Applications

Human Phospho-Tau-T181 Sandwich Immunoassay

		Recommended Concentration	Sample
CLIA	Capture	1-4ug/mL	Rabbit anti-Human Phospho-Tau-T181mAb(Cat. No.RMK0533)
	Detection	0.5-2ug/mL	Rabbit anti-Human Tau mAb(Cat. No.RM17960)
	Standard	1-5000pg/mL	Recombinant Human Phospho-Tau-T181 Protein

Validation Data



This standard curve is only for demonstration purposes. A standard curve should be generated for each assay.