

Rabbit anti-Human LILRB1 mAb (CAP)

Catalog No.: RM17933

Basic Information

Catalog No.
RM17933

Catagory
Elisa Antibody Kit

Application
ELISA

Product Information

Ig Type
Rabbit IgG


Purification
Affinity purification

Endotoxin Level

Storage
Store at -20°C. Avoid freeze / thaw cycles. Preservative 0.05%ProClin 300.
Avoid repeated freeze-thaw cycles.

Formulation
Supplied as a 0.2um filtered solution in PBS with 0.05%ProClin 300,PH 7.4.

Contact

 | order@abclonal.com

 | support@abclonal.com

 | www.abclonal.com

Background

This gene is a member of the leukocyte immunoglobulin-like receptor (LIR) family, which is found in a gene cluster at chromosomal region 19q13.4. The encoded protein belongs to the subfamily B class of LIR receptors which contain two or four extracellular immunoglobulin domains, a transmembrane domain, and two to four cytoplasmic immunoreceptor tyrosine-based inhibitory motifs (ITIMs). The receptor is expressed on immune cells where it binds to MHC class I molecules on antigen-presenting cells and transduces a negative signal that inhibits stimulation of an immune response. It is thought to control inflammatory responses and cytotoxicity to help focus the immune response and limit autoreactivity. Multiple transcript variants encoding different isoforms have been found for this gene.

Immunogen Information

Immunogen
Recombinant Human LILRB1

Cross-Reactivity

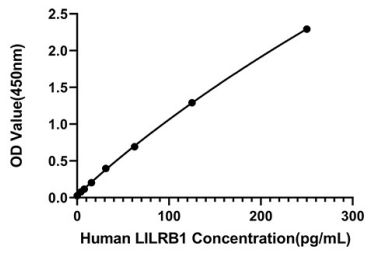
/

Assay Applications

Human LILRB1 Sandwich ELISA Immunoassay

	Recommended Concentration	Sample
ELISA Capture	1-4ug/mL	Rabbit anti-Human LILRB1 (CAP)(Cat. No.RM17933)
ELISA Detection	0.1-0.025ug/mL	Rabbit anti-Human LILRB1 (DET)(Cat. No.RM17934)
Standard	3.91-250pg/mL	Recombinant Human LILRB1 Protein(Cat. No.RP01331)

Validation Data



This standard curve is only for demonstration purposes. A standard curve should be generated for each assay.