

Rabbit anti-Human CD40 mAb (CAP)

Catalog No.: RM17915

Basic Information

Catalog No.
RM17915

Catagory
Elisa Antibody Kit

Application
ELISA,CLIA

Product Information

Ig Type
Rabbit IgG


Purification
Affinity purification


Endotoxin Level

Storage
Store at -20°C.
Avoid repeated freeze-thaw cycles.

Formulation
Supplied as a 0.2um filtered solution in PBS with 0.05%ProClin 300,PH 7.4.

Contact

 | order@abclonal.com

 | support@abclonal.com

 | www.abclonal.com

Background

This gene is a member of the TNF-receptor superfamily. The encoded protein is a receptor on antigen-presenting cells of the immune system and is essential for mediating a broad variety of immune and inflammatory responses including T cell-dependent immunoglobulin class switching, memory B cell development, and germinal center formation. AT-hook transcription factor AKNA is reported to coordinately regulate the expression of this receptor and its ligand, which may be important for homotypic cell interactions. Adaptor protein TNFR2 interacts with this receptor and serves as a mediator of the signal transduction. The interaction of this receptor and its ligand is found to be necessary for amyloid-beta-induced microglial activation, and thus is thought to be an early event in Alzheimer disease pathogenesis. Mutations affecting this gene are the cause of autosomal recessive hyper-IgM immunodeficiency type 3 (HIGM3). Multiple alternatively spliced transcript variants of this gene encoding distinct isoforms have been reported.

Immunogen Information

Immunogen
Recombinant Human CD40 Protein

Cross-Reactivity

No cross-reactivity in ELISA assay withrecombinant Human sCD40L, Human TNF R1

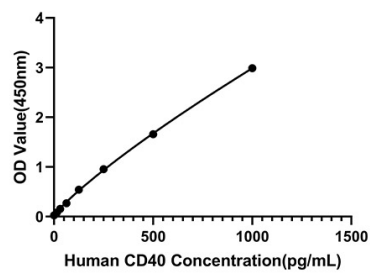
Assay Applications

Human CD40 Sandwich Immunoassay

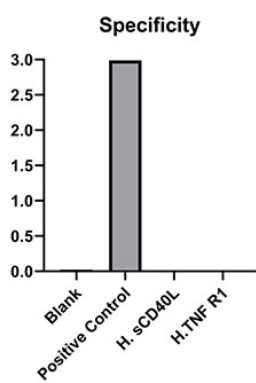
		Recommended Concentration	Sample
ELISA	Capture	1-4ug/mL	Rabbit anti-Human CD40 mAb (CAP)(Cat. No.RM17915)
	Detection	0.025-0.00625ug/mL	Rabbit anti-Human CD40 mAb (DET)(Cat. No.RM17916)
	Standard	15.63-1000pg/mL	Recombinant Human CD40 Protein(Cat. No.RP01214)

CLIA	Capture	1-4ug/mL	Rabbit anti-Human CD40 mAb (CAP)(Cat. No.RM17915)
	Detection	0.5-2ug/mL	Rabbit anti-Human CD40 mAb (DET)(Cat. No.RM17916)
	Standard	2.5-10000pg/mL	Recombinant Human CD40 Protein(Cat. No.RP01214)

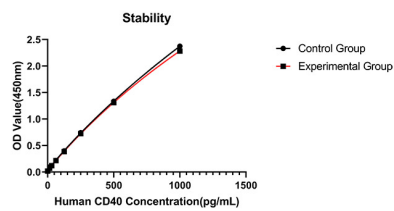
Validation Data



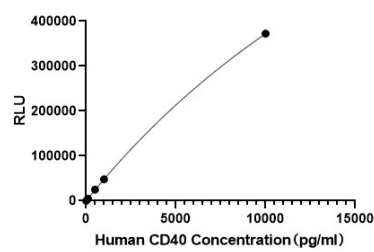
This standard curve is only for demonstration purposes. A standard curve should be generated for each assay.



No significant cross-reactivity or interference was observed.



Placed at 37°C for 3 days, the stability of the standard curve all conform to CV <10%.



This standard curve is only for demonstration purposes. A standard curve should be generated for each assay.