

# Rabbit anti-Human VEGF121 mAb

**Catalog No.: RM17839**

## Basic Information

**Catalog No.**  
RM17839

**Catagory**  
Elisa Antibody Kit

**Application**  
ELISA

## Product Information

**Ig Type**  
Rabbit IgG

**Purification**  
Affinity purification

**Endotoxin Level**

**Storage**  
Store at -20°C.  
**Avoid repeated freeze-thaw cycles.**

**Formulation**  
Supplied as a 0.2um filtered solution in PBS with 0.05%ProClin 300,PH 7.4.

## Contact

 | [order@abclonal.com](mailto:order@abclonal.com)

 | [support@abclonal.com](mailto:support@abclonal.com)

 | [www.abclonal.com](http://www.abclonal.com)

## Background

This gene is a member of the PDGF/VEGF growth factor family. It encodes a heparin-binding protein, which exists as a disulfide-linked homodimer. This growth factor induces proliferation and migration of vascular endothelial cells, and is essential for both physiological and pathological angiogenesis. Disruption of this gene in mice resulted in abnormal embryonic blood vessel formation. This gene is upregulated in many known tumors and its expression is correlated with tumor stage and progression. Elevated levels of this protein are found in patients with POEMS syndrome, also known as Crow-Fukase syndrome. Allelic variants of this gene have been associated with microvascular complications of diabetes 1 (MVCD1) and atherosclerosis. Alternatively spliced transcript variants encoding different isoforms have been described. There is also evidence for alternative translation initiation from upstream non-AUG (CUG) codons resulting in additional isoforms. A recent study showed that a C-terminally extended isoform is produced by use of an alte...

## Immunogen Information

**Immunogen**  
Recombinant Human VEGF121

## Cross-Reactivity

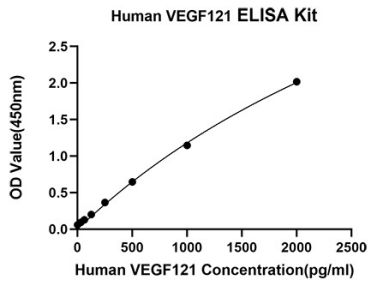
Has cross-reactivity in ELISA with Mouse VEGFA,Rat VEGFA  
;No cross-reactivity in ELISA assay with recombinant H.PDGF-BB□

## Assay Applications

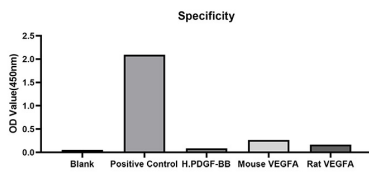
Human VEGF121 Sandwich ELISA

		Recommended Concentration	Sample
ELISA	Capture	0.5-4ug/mL	Rabbit anti-Human VEGF121 mAb(Cat. No.RM17839)
	Detection	0.0025-0.01ug/mL	Rabbit anti-Human VEGF121 mAb(Cat. No.RM17840)
	Standard	31.25-2000pg/mL	Recombinant Human VEGF121 Protein(Cat. No.RP01162)

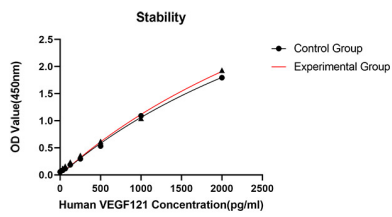
# Validation Data



This standard curve is only for demonstration purposes. A standard curve should be generated for each assay.



From the comparison of the standard curve, it is found that ABclonal has high sensitivity.



Placed at 37°C for 3 days, the stability of the standard curve all conform to CV <10%.