

Rabbit anti-Rat IL-1 beta mAb

Catalog No.: RM17833 **1 Publications**

Basic Information

Catalog No.
RM17833

Category
Elisa Antibody Kit

Application
ELISA

Product Information

Ig Type
Rabbit IgG

Purification
Affinity purification

Endotoxin Level

Storage
Store at -20°C.
Avoid repeated freeze-thaw cycles.

Formulation
Supplied as a 0.2 µm filtered solution in PBS with 0.05% Proclin 300, pH 7.4.

Contact

 | order@abclonal.com

 | support@abclonal.com

 | www.abclonal.com

Background

Enables cytokine activity. Involved in several processes, including positive regulation of intracellular signal transduction; regulation of gene expression; and regulation of neurogenesis. Located in extracellular space. Used to study several diseases, including artery disease (multiple); brain disease (multiple); glomerulonephritis (multiple); interstitial lung disease (multiple); and kidney failure (multiple). Biomarker of several diseases, including artery disease (multiple); auditory system disease (multiple); brain disease (multiple); kidney failure (multiple); and lung disease (multiple). Human ortholog(s) of this gene implicated in several diseases, including autoimmune disease (multiple); blood platelet disease (multiple); eye disease (multiple); gastrointestinal system cancer (multiple); and lung disease (multiple). Orthologous to human IL1B (interleukin 1 beta).

Immunogen Information

Immunogen
Recombinant mouse IL-1 beta protein

Cross-Reactivity

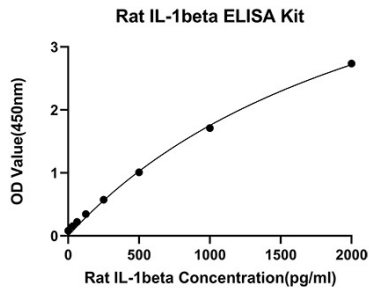
/

Assay Applications

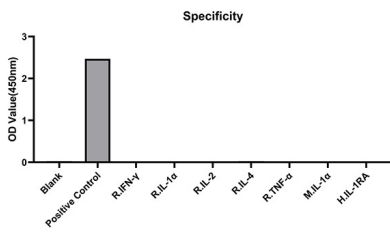
Rat IL-1 beta SSanwich Immunoassay

		Recommended Concentration	Sample
ELISA	Capture	0.5-4 µg/mL	Rabbit anti-Rat IL-1 beta mAb (Cat. No. RM17833)
	Detection	0.016.5-0.066 µg/mL	Rabbit anti-Rat IL-1 beta mAb (Cat. No. RM17834)
	Standard	31.25-2000 pg/mL	Recombinant Rat IL-1 beta Protein

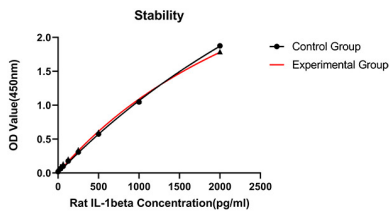
Validation Data



This standard curve is only for demonstration purposes. A standard curve should be generated for each assay.



From the comparison of the standard curve, it is found that ABclonal has high sensitivity.



Placed at 37°C for 3 days, the stability of the standard curve all conform to CV <10%.