

# Rabbit anti-Human NEFL mAb (CAP)

**Catalog No.:** RM17782

## Basic Information

**Catalog No.**  
RM17782

**Catagory**  
Elisa Antibody Kit

**Application**  
ELISA, Multiplex

## Product Information

**Ig Type**  
Rabbit IgG

**Purification**  
Affinity purification

**Endotoxin Level**  
N/A

**Storage**  
Store at -20°C.  
**Avoid repeated freeze-thaw cycles.**

**Formulation**  
Supplied as a 0.2 µm filtered solution in PBS with 0.05% Proclin 300, pH 7.3.

## Contact

 | order@abclonal.com

 | support@abclonal.com

 | www.abclonal.com

## Background

Neurofilaments are type IV intermediate filament heteropolymers composed of light, medium, and heavy chains. Neurofilaments comprise the axoskeleton and they functionally maintain the neuronal caliber. They may also play a role in intracellular transport to axons and dendrites. This gene encodes the light chain neurofilament protein. Mutations in this gene cause Charcot-Marie-Tooth disease types 1F (CMT1F) and 2E (CMT2E), disorders of the peripheral nervous system that are characterized by distinct neuropathies. A pseudogene has been identified on chromosome Y.

## Immunogen Information

**Immunogen**  
Recombinant Human NEFL Protein

## Cross-Reactivity

No cross-reactivity in ELISA with recombinant NEL

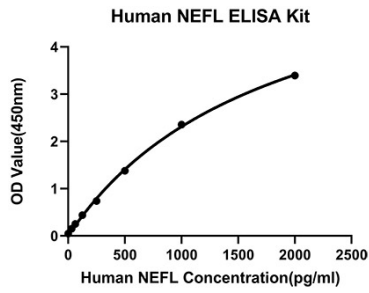
## Assay Applications

Human NEFL Sandwich Immunoassay

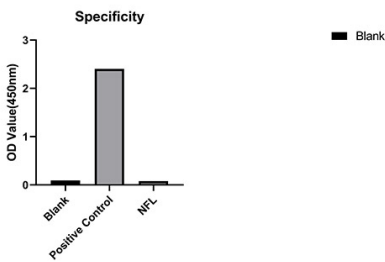
		Recommended Concentration	Sample
ELISA	Capture	0.5-2 µg/mL	Rabbit anti-Human NEFL mAb (Cat. No. RM17782)
	Detection	0.02-0.083 µg/mL	Rabbit anti-Human NEFL mAb (Cat. No. RM17783)
	Standard	31.25-2000 pg/mL	Recombinant Human NEFL Protein

Multiplex	Capture	3-20 µg/mL	Rabbit anti-Human NEFL mAb (Cat. No. RM17782)
	Detection	0.017-2 µg/mL	Rabbit anti-Human NEFL mAb (Cat. No. RMK0458)
	Standard	6.86-5000 pg/mL	Recombinant Human NEFL Protein

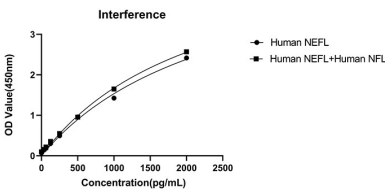
# Validation Data



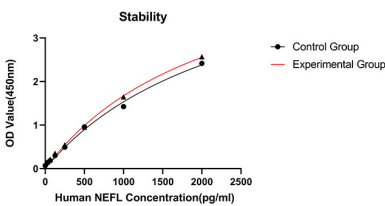
This standard curve is only for demonstration purposes. A standard curve should be generated for each assay.



From the comparison of the standard curve, it is found that ABclonal has high sensitivity.



No significant cross-reactivity or interference was observed.



Placed at 37°C for 3 days, the stability of the standard curve all conform to CV <10%.