

Rabbit anti-Human IL-1 β mAb (DET)

Catalog No.: RM17734 **1 Publications**



Basic Information

Catalog No.
RM17734**Catagory**
Elisa Antibody Kit**Application**
ELISA,Multiplex,CLIA

Product Information

Ig Type
Rabbit IgG**Purification**
Affinity purification**Endotoxin Level****Storage**
Store at -20°C.
Avoid repeated freeze-thaw cycles.**Formulation**
Supplied as a 0.2um filtered solution in PBS with 0.1%Braveds MB-1,PH 7.4.

Contact

 | order@abclonal.com | support@abclonal.com | www.abclonal.com

Background

The protein encoded by this gene is a member of the interleukin 1 cytokine family. This cytokine is produced by activated macrophages as a proprotein, which is proteolytically processed to its active form by caspase 1 (CASP1/ICE). This cytokine is an important mediator of the inflammatory response, and is involved in a variety of cellular activities, including cell proliferation, differentiation, and apoptosis. The induction of cyclooxygenase-2 (PTGS2/COX2) by this cytokine in the central nervous system (CNS) is found to contribute to inflammatory pain hypersensitivity. Similarly, IL-1B has been implicated in human osteoarthritis pathogenesis. Patients with severe Coronavirus Disease 2019 (COVID-19) present elevated levels of pro-inflammatory cytokines such as IL-1B in bronchial alveolar lavage fluid samples. The lung damage induced by the Severe acute respiratory syndrome coronavirus 2 (SARS-CoV-2) is to a large extent, a result of the inflammatory response promoted by cytokines such as IL-1B. This gene and eight other interleukin 1 ...

Immunogen Information

Immunogen
Recombinant fusion protein containing a sequence corresponding to amino acids 117-269 of human IL-1 β (NP_000567.1).

Cross-Reactivity

No cross-reactivity in ELISA with recombinant hIL-1A \square hIL-1RA \square hIL-18 \square hIL-33 \square mIL-1B \square mIL-33 \square rlIL-1A \square rlIL-1B

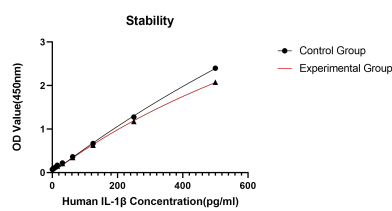
Assay Applications

Human IL-1 β Sandwich Immunoassay

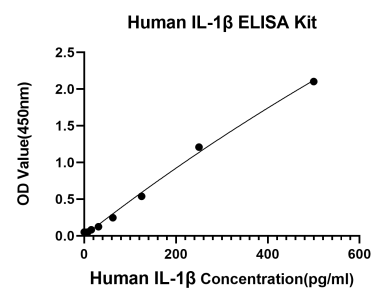
		Recommended Concentration	Sample
ELISA	Capture	0.5-2ug/mL	Rabbit anti-Human IL-1 β mAb(Cat. No.RM17733)
	Detection	0.05-0.2ug/mL	Rabbit anti-Human IL-1 β mAb(Cat. No.RM17734)
	Standard	7.81-500pg/mL	Recombinant Human IL-1 β Protein

Multiplex	Capture	/	Rabbit anti-Human IL-1 β mAb(Cat. No.RM17733)
	Detection	/	Rabbit anti-Human IL-1 β mAb(Cat. No.RM17734)
	Standard	13.7-10000pg/mL	Recombinant Human IL-1 β Protein
Multiplex	Capture	3-20ug/mL	Rabbit anti-Human IL-1 β mAb(Cat. No.RM17965)
	Detection	0.017-2ug/mL	Rabbit anti-Human IL-1 β mAb(Cat. No.RM17734)
	Standard	13.72-10000pg/mL	Recombinant Human IL-1 beta Protein(Cat. No. RP00002)
CLIA	Capture	1-4ug/mL	Rabbit anti-Human IL-1 β (CAP)(Cat. No.RM17743)
	Detection	0.5-2ug/mL	Rabbit anti-Human IL-1 β (DET)(Cat. No.RM17734)
	Standard	0.625-10ng/mL	Recombinant Human IL-1 β Protein

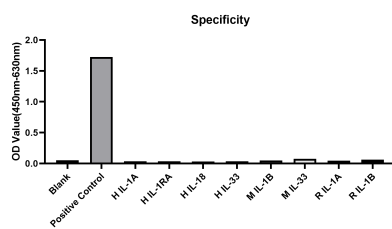
Validation Data



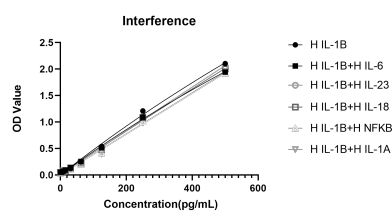
Placed at 37°C for 3 days, the stability of the standard curve all conform to CV <10%.



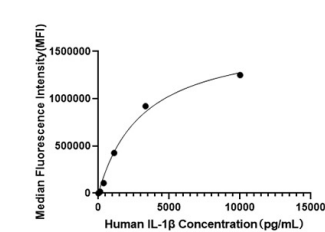
This standard curve is only for demonstration purposes. A standard curve should be generated for each assay.



No significant cross-reactivity or interference was observed.

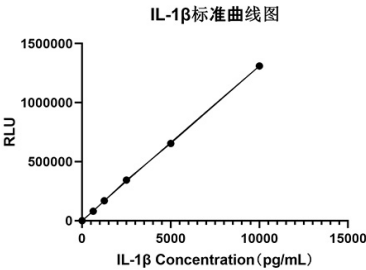


No significant cross-reactivity or interference was observed.



This standard curve is only for demonstration purposes. A standard curve should be generated for each assay.

Validation Data



This standard curve is only for demonstration purposes. A standard curve should be generated for each assay.