

ATF3 Knockout 293T Cell Line, Homozygous

Catalog No.: RM01859

Basic Information

Catalog No.

RM01859

Category

Cell Line

Parental Cell line

293T

Genotype

Knockout

Gene Information

Gene Symbol

ATF3

Species

Human

Gene ID

467

Swiss Prot

P18847

Contact

☎ | 400-999-6126

✉ | cn.market@abclonal.com.cn

🌐 | www.abclonal.com.cn

Background

This gene encodes a member of the mammalian activation transcription factor/cAMP responsive element-binding (CREB) protein family of transcription factors. This gene is induced by a variety of signals, including many of those encountered by cancer cells, and is involved in the complex process of cellular stress response. Multiple transcript variants encoding different isoforms have been found for this gene. It is possible that alternative splicing of this gene may be physiologically important in the regulation of target genes. [provided by RefSeq, Apr 2011]

Product Information

Description

ATF3 Knockout 293T Cell Line is engineered from 293T cell line with Gene-Editing Technology.

Allele-1:61bp deletion in exon2

Allele-2:61bp deletion in exon2

Mammalian cells such as human, rat and mouse cells are normally diploid with two alleles. Homozygote: both alleles were knocked out, mRNA has no signal, no expression of proteins. Heterozygote: only one allele was knocked out, the mRNA transcript levels was decreased compared to wild type, and the protein expression levels was also lower than that of the wild type.

Packaging

1 vial parental cell line and 1 vial knockout cell line

Shipping Conditions

Dry ice

Amount

1~5x10⁶ cells/vial

Storage

Stored in liquid nitrogen for a long time less than -130°C. Minimizing freeze-thaw cycles.

Protocol

Upon arrival, it should be maintained in DMEM medium with 10%(v/v) fetal bovine serum and 100U penicillin-streptomycin, at 37°C with 5% CO₂ condition.

1. Thaw the vial in 37°C water bath, and shake it to melt as soon as possible.
2. Transfer the cell suspension to a 15mL conical tube with pre-warmed 5mL complete medium and centrifuge 1000rpm for approximately 5 minutes at room temperature.
3. Remove and discard the supernatant.
4. Resuspend the cell pellet with 1mL pre-warmed complete medium and seed in 10cm dish.
5. Add 8-10mL of complete medium.
6. Incubate the culture at 37°C incubator with 5% CO₂.
7. A subcultivation ratio of 1:2-1:4 is recommended.

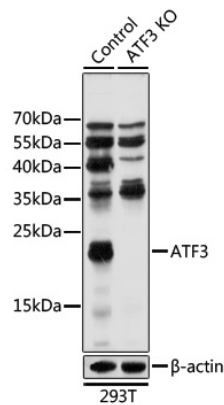
Sequencing data

WT CCCCTGAAGAAGAT*****AGAAGGAGAAGACG
Mut CCCCTGAAGAAGAT***Deletion***AGAAGGAGAAGACG
Allele-1: 61bp deletion in exon2

WT CCCCTGAAGAAGAT*****AGAAGGAGAAGACG
Mut CCCCTGAAGAAGAT***Deletion***AGAAGGAGAAGACG
Allele-2: 61bp deletion in exon2

Genome sequence analysis of PCR products from parental (WT) and ATF3 knockout (KO) 293T cells, using sanger sequencing.

WB data



Western blot analysis of extracts from parental (Control) and ATF3 Knockout 293T Cell Line, using ATF3 antibody at 1:1000 dilution.