

CDH2 Knockout HeLa Cell Line, Homozygous

Catalog No.: RM01837

Basic Information

Catalog No.

RM01837

Category

Cell Line

Parental Cell line

HeLa

Genotype

Knockout

Gene Information

Gene Symbol

CDH2

Species

Human

Gene ID

1000

Swiss Prot

P19022

Synonyms

CD325; CDHN; CDW325; NCAD

Contact

☎ | 400-999-6126

✉ | cn.market@abclonal.com.cn

🌐 | www.abclonal.com.cn

Background

This gene encodes a classical cadherin and member of the cadherin superfamily. Alternative splicing results in multiple transcript variants, at least one of which encodes a preproprotein is proteolytically processed to generate a calcium-dependent cell adhesion molecule and glycoprotein. This protein plays a role in the establishment of left-right asymmetry, development of the nervous system and the formation of cartilage and bone.

Product Information

Description

CDH2 Knockout cell line is engineered from HeLa cell line with Gene-Editing Technology.

Allele-1:44bp deletion in exon2

Allele-2:44bp deletion in exon2

Mammalian cells such as human, rat and mouse cells are normally diploid with two alleles.

Homozygote: both alleles were knocked out, mRNA has no signal, no expression of proteins.

Heterozygote: only one allele was knocked out, the mRNA transcript levels was decreased compared to wild type, and the protein expression levels was also lower than that of the wild type.

Packaging

1 vial parental cell line and 1 vial knockout cell line

Shipping Conditions

Dry ice

Amount

1~5x10⁶ cells/vial.

Storage

Stored in liquid nitrogen for a long time less than -130°C. Minimizing freeze-thaw cycles.

Protocol

Upon arrival, it should be maintained in DMEM medium with 10%(v/v) fetal bovine serum and 100U penicillin-streptomycin, at 37°C with 5% CO₂ condition.

1. Thaw the vial in 37°C water bath, and shake it to melt as soon as possible.
2. Transfer the cell suspension to a 15mL conical tube with pre-warmed 5mL complete medium and centrifuge 1000rpm for approximately 5 minutes at room temperature.
3. Remove and discard the supernatant.
4. Resuspend the cell pellet with 1mL pre-warmed complete medium and seed in 10cm dish.
5. Add 8-10mL of complete medium.
6. Incubate the culture at 37°C incubator with 5% CO₂.
7. A subcultivation ratio of 1:2-1:4 is recommended.

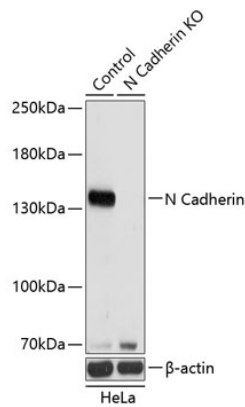
Sequencing data

WT AAAGAGACCCAGGA*****CTGAGGAGTCAGTG
Mut AAAGAGACCCAGGA***Deletion***CTGAGGAGTCAGTG
Allele-1: 44bp deletion in exon2

WT AAAGAGACCCAGGA*****CTGAGGAGTCAGTG
Mut AAAGAGACCCAGGA***Deletion***CTGAGGAGTCAGTG
Allele-2: 44bp deletion in exon2

Genome sequence analysis of PCR products from parental (WT) and CDH2 knockout (KO) HeLa cells, using sanger sequencing.

WB data



Western blot analysis of extracts from parental (Control) and CDH2 knockout (KO) HeLa cells, using CDH2 antibody at 1:1000 dilution.