

# BECN1 Knockout 293T Cell Line, Homozygous

Catalog No.: RM01827

## Basic Information

### Catalog No.

RM01827

### Category

Cell Line

### Parental Cell line

293T

### Genotype

Knockout

## Gene Information

### Gene Symbol

BECN1

### Species

Human

### Gene ID

8678

### Swiss Prot

Q14457

### Synonyms

ATG6; VPS30; beclin1

## Contact

☎ | 400-999-6126

✉ | [cn.market@abclonal.com.cn](mailto:cn.market@abclonal.com.cn)

🌐 | [www.abclonal.com.cn](http://www.abclonal.com.cn)

## Background

This gene encodes a protein that regulates autophagy, a catabolic process of degradation induced by starvation. The encoded protein is a component of the phosphatidylinositol-3-kinase (PI3K) complex which mediates vesicle-trafficking processes. This protein is thought to play a role in multiple cellular processes, including tumorigenesis, neurodegeneration and apoptosis. Alternative splicing results in multiple transcript variants.

## Product Information

### Description

BECN1 Knockout cell line is engineered from 293T cell line with Gene-Editing Technology.

Allele-1:104bp deletion in exon1

Allele-2:104bp deletion in exon1

Mammalian cells such as human, rat and mouse cells are normally diploid with two alleles.

Homozygote: both alleles were knocked out, mRNA has no signal, no expression of proteins.

Heterozygote: only one allele was knocked out, the mRNA transcript levels was decreased compared to wild type, and the protein expression levels was also lower than that of the wild type.

### Packaging

1 vial parental cell line and 1 vial knockout cell line

### Shipping Conditions

Dry ice

### Amount

1~5x10<sup>6</sup> cells/vial.

### Storage

Stored in liquid nitrogen for a long time less than -130°C. Minimizing freeze-thaw cycles.

### Protocol

Upon arrival, it should be maintained in DMEM medium with 10%(v/v) fetal bovine serum and 100U penicillin-streptomycin, at 37°C with 5% CO<sub>2</sub> condition.

1. Thaw the vial in 37°C water bath, and shake it to melt as soon as possible.
2. Transfer the cell suspension to a 15mL conical tube with pre-warmed 5mL complete medium and centrifuge 1000rpm for approximately 5 minutes at room temperature.
3. Remove and discard the supernatant.
4. Resuspend the cell pellet with 1mL pre-warmed complete medium and seed in 10cm dish.
5. Add 8-10mL of complete medium.
6. Incubate the culture at 37°C incubator with 5% CO<sub>2</sub>.
7. A subcultivation ratio of 1:2-1:4 is recommended.

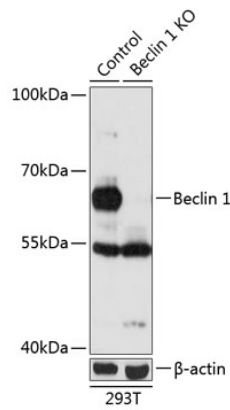
## Sequencing data

WT TCTTTTCCACGGCC\*\*\*\*\*CCGTGTCACCATCC  
Mut TCTTTTCCACGGCC\*\*\*Deletion\*\*\*CCGTGTCACCATCC  
Allele-1: 104bp deletion in exon1

WT TCTTTTCCACGGCC\*\*\*\*\*CCGTGTCACCATCC  
Mut TCTTTTCCACGGCC\*\*\*Deletion\*\*\*CCGTGTCACCATCC  
Allele-2: 104bp deletion in exon1

Genome sequence analysis of PCR products from parental (WT) and BECN1 knockout (KO) 293T cells, using sanger sequencing.

## WB data



Western blot analysis of extracts from parental (Control) and BECN1 knockout (KO) 293T cells, using BECN1 antibody at 1:1000 dilution.