

VIM Knockdown 293T Cell Lysate, Heterozygous

Catalog No.: RM01793

Basic Information

Catalog No.

RM01793

Category

Cell Lysate

Parental Cell line

293T

Genotype

Knockdown

Background

This gene encodes a member of the intermediate filament family. Intermediate filaments, along with microtubules and actin microfilaments, make up the cytoskeleton. The protein encoded by this gene is responsible for maintaining cell shape, integrity of the cytoplasm, and stabilizing cytoskeletal interactions. It is also involved in the immune response, and controls the transport of low-density lipoprotein (LDL)-derived cholesterol from a lysosome to the site of esterification. It functions as an organizer of a number of critical proteins involved in attachment, migration, and cell signaling. Mutations in this gene causes a dominant, pulverulent cataract.[provided by RefSeq, Jun 2009]

Gene Information

Gene Symbol

VIM

Species

Human

Gene ID

7431

Swiss Prot

P08670

Synonyms

CTRCT30; HEL113

Contact

☎ | 400-999-6126

✉ | cn.market@abclonal.com.cn

🌐 | www.abclonal.com.cn

Product Information

Description

VIM Knockdown 293T Cell Line is engineered from 293T cell line with Gene-Editing technology.

Allele-1:1bp insertion and 352bp deletion in exon1

Allele-2:368bp deletion in exon1

Mammalian cells such as human, rat and mouse cells are normally diploid with two alleles.

Homozygote: both alleles were knocked out, mRNA has no signal, no expression of proteins.

Heterozygote: only one allele was knocked out, the mRNA transcript levels was decreased compared to wild type, and the protein expression levels was also lower than that of the wild type.

Packaging

1 vial parental cell Lysate and 1 vial knockout cell Lysate

Shipping Conditions

4°C

Amount

50μL, 2μg/μL.

Storage

Lysate is stable for 12 months when stored at -20°C. Minimizing freeze-thaw cycles.

Protocol

To be used as WB control. Lysate is supplied in 1× SDS sample buffer (2% SDS, 60 mM Tris-HCl pH 6.8, 10% Glycerol, 0.02% Bromophenol blue, 60 mM beta-mercaptoethanol). Lysate should be boiled for 3 - 5 minutes before loading onto gel.

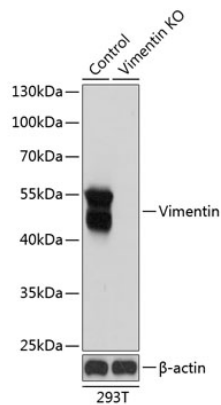
Sequencing data

WT CCGAGCTCCAGCC *****CCTGGGGGACCTCT
Mut CCGAGCTCCAGCC***Deletion***CCTGGGGGACCTCT
Allele-1: 1bp insertion and 352bp deletion in exon1

WT GCGAGCCGGCCGAG*****ACCTCTACGAGGAG
Mut GCGAGCCGGCCGAG***Deletion***ACCTCTACGAGGAG
Allele-2: 368bp deletion in exon1

Genome sequence analysis of PCR products from parental (WT) and VIM knockdown (KD) 293T cells, using sanger sequencing.

WB data



Western blot analysis of extracts from parental (Control) and VIM knockdown (KD) 293T cells, using VIM antibody (A11952) at 1:1000 dilution.