

# MAP1LC3B Knockdown 293T Cell Lysate, Heterozygous

www.abclonal.com

**Catalog No.:** RM01782

## Basic Information

### Catalog No.

RM01782

### Category

Cell Lysate

### Parental Cell line

293T

### Genotype

Knockdown

## Background

The product of this gene is a subunit of neuronal microtubule-associated MAP1A and MAP1B proteins, which are involved in microtubule assembly and important for neurogenesis. Studies on the rat homolog implicate a role for this gene in autophagy, a process that involves the bulk degradation of cytoplasmic component. [provided by RefSeq, Jul 2008]

## Gene Information

### Gene Symbol

MAP1LC3B

### Species

Human

### Gene ID

81631

### Swiss Prot

Q9GZQ8

### Synonyms

ATG8F; LC3B; MAP1A/1BLC3; MAP1LC3B-a

## Contact

☎ | 400-999-6126

✉ | [cn.market@abclonal.com.cn](mailto:cn.market@abclonal.com.cn)

🌐 | [www.abclonal.com.cn](http://www.abclonal.com.cn)

## Product Information

### Description

MAP1LC3B Knockdown 293T Cell Line is engineered from 293T cell line with Gene-Editing technology.

Allele-1:107bp deletion in exon3

Allele-2:107bp deletion in exon3

Mammalian cells such as human, rat and mouse cells are normally diploid with two alleles.

Homozygote: both alleles were knocked out, mRNA has no signal, no expression of proteins.

Heterozygote: only one allele was knocked out, the mRNA transcript levels was decreased compared to wild type, and the protein expression levels was also lower than that of the wild type.

### Packaging

1 vial parental cell Lysate and 1 vial knockout cell Lysate

### Shipping Conditions

4°C

### Amount

50μL, 2μg/μL.

### Storage

Lysate is stable for 12 months when stored at -20°C. Minimizing freeze-thaw cycles.

### Protocol

To be used as WB control. Lysate is supplied in 1× SDS sample buffer (2% SDS, 60 mM Tris-HCl pH 6.8, 10% Glycerol, 0.02% Bromophenol blue, 60 mM beta-mercaptoethanol).

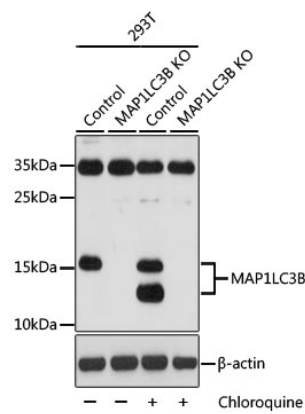
Lysate should be boiled for 3 - 5 minutes before loading onto gel.

## Sequencing data

WT CCGCGCCTGGCCCT\*\*\*\*\*AGGTATTCAAGTCAC  
Mut CCGCGCCTGGCCCT\*\*\*Deletion\*\*\*AGGTATTCAAGTCAC  
Allele-1: 107bp deletion in exon3  
WT CCGCGCCTGGCCCT\*\*\*\*\*AGGTATTCAAGTCAC  
Mut CCGCGCCTGGCCCT\*\*\*Deletion\*\*\*AGGTATTCAAGTCAC  
Allele-2: 107bp deletion in exon3

Genome sequence analysis of PCR products from parental (WT) and MAP1LC3B Knockdown (KD) 293T cells, using sanger sequencing.

## WB data



Western blot analysis of extracts from parental (Control) and MAP1LC3B knockout (KO) 293T cells, using MAP1LC3B antibody (A11282) at 1:1000 dilution.