

ELAVL1 Knockout 293T Cell Lysate, Homozygous

Catalog No.: RM01775

Basic Information

Catalog No.

RM01775

Category

Cell Lysate

Parental Cell line

293T

Genotype

Knockout

Gene Information

Gene Symbol

ELAVL1

Species

Human

Gene ID

1994

Swiss Prot

Q15717

Synonyms

ELAV1; HUR; Hua; MelG

Contact

☎ | 400-999-6126

✉ | cn.market@abclonal.com.cn

🌐 | www.abclonal.com.cn

Background

The protein encoded by this gene is a member of the ELAVL family of RNA-binding proteins that contain several RNA recognition motifs, and selectively bind AU-rich elements (AREs) found in the 3' untranslated regions of mRNAs. AREs signal degradation of mRNAs as a means to regulate gene expression, thus by binding AREs, the ELAVL family of proteins play a role in stabilizing ARE-containing mRNAs. This gene has been implicated in a variety of biological processes and has been linked to a number of diseases, including cancer. It is highly expressed in many cancers, and could be potentially useful in cancer diagnosis, prognosis, and therapy. [provided by RefSeq, Sep 2012]

Product Information

Description

ELAVL1 Knockout 293T Cell Line is engineered from 293T cell line with Gene-Editing technology.

Allele-1:65bp deletion in exon1

Allele-2:65bp deletion in exon1

Mammalian cells such as human, rat and mouse cells are normally diploid with two alleles. Homozygote: both alleles were knocked out, mRNA has no signal, no expression of proteins. Heterozygote: only one allele was knocked out, the mRNA transcript levels was decreased compared to wild type, and the protein expression levels was also lower than that of the wild type.

Packaging

1 vial parental cell Lysate and 1 vial knockout cell Lysate

Shipping Conditions

4°C

Amount

50μL, 2μg/μL.

Storage

Lysate is stable for 12 months when stored at -20°C. Minimizing freeze-thaw cycles.

Protocol

To be used as WB control. Lysate is supplied in 1× SDS sample buffer (2% SDS, 60 mM Tris-HCl pH 6.8, 10% Glycerol, 0.02% Bromophenol blue, 60 mM beta-mercaptoethanol). Lysate should be boiled for 3 - 5 minutes before loading onto gel.

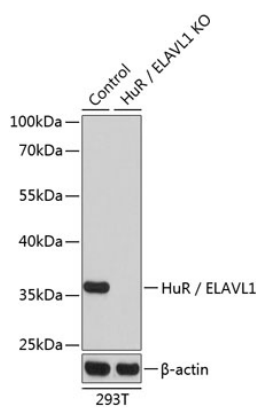
Sequencing data

WT ATGGCCGAAGACTG*****AGTTACGAAGCCTG
Mut ATGGCCGAAGACTG***Deletion***AGTTACGAAGCCTG
Allele-1: 65bp deletion in exon1

WT ATGGCCGAAGACTG*****AGTTACGAAGCCTG
Mut ATGGCCGAAGACTG***Deletion***AGTTACGAAGCCTG
Allele-2: 65bp deletion in exon1

Genome sequence analysis of PCR products from parental (WT) and ELAVL1 knockout (KO) 293T cells, using sanger sequencing.

WB data



Western blot analysis of extracts from parental (Control) and ELAVL1 knockout (KO) 293T cells, using ELAVL1 antibody (A1608) at 1:1000 dilution.