

Human T Cell Activation Kit[Anti-CD3/CD28]

Catalog No.: RK40100

Basic Information

Observed MW**Calculated MW****Category**

Primary antibody

Applications

FC, in vitro T cell stimulation/activation

Cross-Reactivity

Human

CloneNo number

AMC50002/ARC5173-07

Background

T cells are activated by signaling through ITAM (immunoreceptor tyrosine-based activation motif)-containing CD3 signaling chains that associate with the T cell receptor. Co-stimulation through CD28 on T cells provides an additional signal required for effective T cell activation. CD3: Is a complex composed of 4 distinct subunits, Delta (CD3 δ), Epsilon (CD3 ϵ), Gamma (CD3 γ), and Zeta (CD3 ζ). It is a surface structure associated with the T-cell receptor (TCR) to form a complex involved in antigen recognition and signal transduction. CD3 is a pan-T-cell marker and is expressed by thymocytes and all mature T cells of the peripheral blood and lymphoid tissues. CD28: is a 44 kD disulfide-linked homodimeric type I glycoprotein. It is a member of the immunoglobulin superfamily and is also known as T44 or Tp44. CD28 is expressed on most T lineage cells, NK cell subsets, and plasma cells.

Recommended Dilutions

FC Recommended starting concentration is 2 μ g/mL. Please optimize the concentration based on your specific assay requirements.

Immunogen Information

Gene ID**Swiss Prot****Immunogen**

Recombinant protein (or fragment). This information is considered to be commercially sensitive.

Synonyms

Contact

 | 400-999-6126 | cn.market@abclonal.com.cn | www.abclonal.com.cn

Product Information

Source

Mouse/Rabbit

Isotype

mouse IgG2a/Rabbit IgG

Purification

Affinity purification

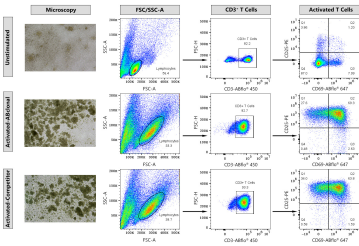
Storage

Store at 2-8°C. Avoid freeze.

Buffer: 0.2 μ m filtered in acetate-buffered solution (CD3 mAb), pH 5.5, containing no preservative/0.2 μ m filtered in phosphate-buffered solution (CD28 mAb), pH 7.2, containing no preservative.

Endotoxin Level: Less than 0.01 EU/μg of the protein (< 0.001 ng/μg of the protein) as determined by the LAL test.

Validation Data



Flow cytometry: Human T cells in PBMC were activated using Mouse anti-Human CD3 mAb (A25761,2ug/ml) and Rabbit anti-Human CD28 mAb (A27700,2ug/ml), or competitor's CD3/CD28 antibody for 72 hours. The unstimulated control was performed without treatment. Cells were fluorescently stained with ABflo® 450 Rabbit anti-Human CD3 mAb (A27177,5 µL/Test), PE Rabbit anti-Human CD25 mAb (A26773,5 µL/Test), ABflo® 647 Rabbit anti-Human CD69 mAb (A25892,5 µL/Test). The degree of T cell activation are defined as CD25+CD69+ cells on CD3+ T cells gate.