

# Human/Monkey Treg Panel

Catalog No.: RK40022

## Basic Information

### Observed MW

### Calculated MW

### Category

Primary antibody

### Applications

FC

### Cross-Reactivity

Human, Cynomolgus

## Background

The 7-fluorescence Human/Monkey Treg Panel has been designed for identify and phenotype T regulatory cells in Human/Monkey blood or tissue samples. ABflo® multi-fluorescence panel RK40022 covers the core CD markers of CD45, CD3, CD4, CD8a, CD14, CD25 and FOXP3. Our plots showed clear subgroups of CD14-CD3+ T lymphocytes, CD3+CD4+ T lymphocytes, CD3+CD8+ T lymphocytes and CD4+CD25+FOXP3+ Regulatory T cells (cite figures).

## Recommended Dilutions

FC                      5 µl per 10<sup>6</sup> cells in  
                                 100 µl volume

## Immunogen Information

### Gene ID

### Swiss Prot

### Immunogen

This information is considered to be commercially sensitive.

### Synonyms

## Contact

☎ | 400-999-6126

✉ | [cn.market@abclonal.com.cn](mailto:cn.market@abclonal.com.cn)

🌐 | [www.abclonal.com.cn](http://www.abclonal.com.cn)

## Product Information

### Source

### Isotype

### Purification

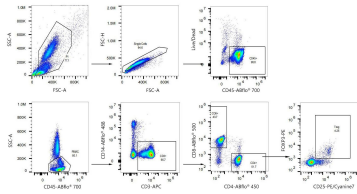
IgG

### Storage

Store at 2-8°C. Avoid freeze.

Buffer: PBS with 0.09% Sodium azide, 0.2% BSA, pH7.3.

## Validation Data



Multicolor flow cytometry panel to identify Human/Monkey Treg cell subsets. Cynomolgus monkey blood were surface stained with ABflo® 700 Rabbit anti-Human/Monkey CD45 mAb (A27932,5 µL/Test), APC Rabbit anti-Human/Monkey CD3 mAb (A27111,5 µL/Test), ABflo® 450 Rabbit anti-Human/Monkey CD4 mAb (A26523,5 µL/Test), ABflo® 500 Rabbit anti-Human/Monkey CD8a mAb (A26731,5 µL/Test), ABflo® 488 Rabbit anti-Human/Monkey CD14 mAb (A25071,5 µL/Test), PE/Cyanine7 Rabbit anti-Human/Monkey CD25 mAb (A27400,5 µL/Test), PE Rabbit anti-Human/Mouse/Monkey FOXP3 mAb (A27686,5 µL/Test). All antibodies are validated for Flow cytometry. CD3+ T lymphocytes are defined as CD14-CD3+; CD4+ T lymphocytes are defined as CD3+CD4+; CD8+ T lymphocytes are defined as CD3+CD8+; Regulatory T cells are defined as CD4+CD25+FOXP3+.