

Mouse B Lymphocyte Subset Panel

Catalog No.: RK40014

Basic Information

Observed MW

Calculated MW

Category

Primary antibody

Applications

FC

Cross-Reactivity

Mouse

Background

The 3-fluorescence Mouse B Lymphocyte Subset Panel has been designed for identify and phenotype B Lymphocyte Subset in Mouse blood or tissue samples. ABflo® multi-fluorescence panel RK40014 covers the core markers of CD45R/B220, CD23 and IgM. Our plots showed clear subgroups of CD23 (FcεRII), CD45R/B220 and Mouse IgM (cite figures).

Recommended Dilutions

FC

Immunogen Information

Gene ID

Swiss Prot

Immunogen

This information is considered to be commercially sensitive.

Synonyms

Contact

☎ | 400-999-6126

✉ | cn.market@abclonal.com.cn

🌐 | www.abclonal.com.cn

Product Information

Source

Isotype

Purification

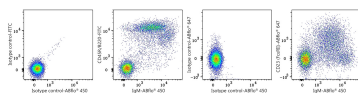
IgG

Storage

Store at 2-8°C. Avoid freeze.

Buffer: PBS with 0.09% Sodium azide, 0.2% BSA, pH7.3.

Validation Data



Multicolor flow cytometry panel to identify Mouse B Lymphocyte Subsets. BALB/c mouse splenocytes were surface stained with FITC anti-Mouse CD45R/B220 mAb (A25655,1 μ L/Test), ABflo® 647 Rabbit anti-Mouse CD23 mAb (A23851,5 μ L/Test), ABflo® 450 Rabbit anti-Mouse IgM mAb (A26231,5 μ L/Test). All antibodies are validated for flow cytometry. The B-cell subsets can be identified by the expression levels of CD23 (Fc ϵ RII), CD45R/B220, and IgM.