

Human T Cells Panel

Catalog No.: RK40007

Basic Information

Observed MW

Calculated MW

Category

Primary antibody

Applications

FC

Cross-Reactivity

Human

Background

The 4-fluorescence Human T Cells Panel has been designed for identify and phenotype T cells in Human blood or tissue samples. ABflo® multi-fluorescence panel RK40007 covers the core CD markers of CD45, CD3, CD45 and CD8. Our plots showed clear subgroups of CD4+ lymphocytes, CD3+ T lymphocytes, CD4+CD8- T cells, and CD4-CD8+ T cells (cite figures).

Recommended Dilutions

FC 5 µl per 10⁶ cells in
100 µl volume

Immunogen Information

Gene ID

Swiss Prot

Immunogen

This information is considered to be commercially sensitive.

Synonyms

Contact

☎ | 400-999-6126

✉ | cn.market@abclonal.com.cn

🌐 | www.abclonal.com.cn

Product Information

Source

Rabbit

Isotype

IgG

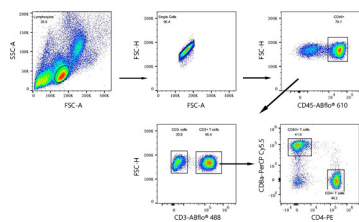
Purification

Storage

Store at 2-8°C. Avoid freeze.

Buffer: PBS with 0.09% Sodium azide, 0.2% BSA, pH7.3.

Validation Data



Multicolor flow cytometry panel to identify human T cells. PBMCs were surface stained with ABflo® 610 Rabbit anti-Human CD45 mAb (A25823,5 µL/Test), ABflo® 488 Rabbit anti-Human CD3 mAb (A26283,5 µL/Test), PE Rabbit anti-Human CD4 mAb (A26596,5 µL/Test) and PerCP/Cyanine5.5 Rabbit anti-Human/Monkey CD8a mAb (A26221,5 µL/Test). All antibodies are validated for Flow cytometry. CD45 lymphocytes are defined as CD45+; CD3 T lymphocytes are defined as CD3+; CD4 T cells are defined as CD4+CD8-; CD8 T cells are defined as CD4-CD8+.