

# ABflo® 610 Streptavidin

Catalog No.: AT0006

## Basic Information

### Observed MW

### Calculated MW

### Category

Primary antibody

### Applications

FC

### Cross-Reactivity

Species independent

### CloneNo number

Streptavidin

### Conjugate

ABflo® 610. Ex:421nm. Em:612nm.

## Background

Streptavidin binds to biotin with high affinity. Streptavidin-ABflo® 610 is useful for detecting biotinylated antibodies.

## Recommended Dilutions

FC                    ≤0.25 µg per million cells  
                         in 100 µl volume

## Immunogen Information

### Gene ID

### Swiss Prot

### Immunogen

This information is considered to be commercially sensitive.

### Synonyms

SA V1; SA V2

## Contact

☎ | 400-999-6126

✉ | [cn.market@abclonal.com.cn](mailto:cn.market@abclonal.com.cn)

🌐 | [www.abclonal.com.cn](http://www.abclonal.com.cn)

## Product Information

### Source

### Isotype

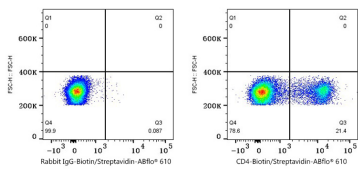
### Purification

### Storage

Store at 2-8°C. Avoid freeze.

Buffer: PBS with 0.09% Sodium azide, 0.2% BSA, pH7.3.

# Validation Data



Flow cytometry: 1X10<sup>6</sup> C57BL/6 mouse splenocytes were surface-stained with Biotin Rabbit IgG isotype control (A25626,5 µl/Test,left) or Biotin Rabbit anti-Mouse CD4 mAb (A28157,0.25 µg,right), followed by ABflo® 610 Streptavidin (AT0006,0.25 µg) staining.