

# HRP-conjugated Rabbit anti-Human IgG (Fc) mAb

Catalog No.: AS197

## Basic Information

### Observed MW

### Calculated MW

55 kDa

### Category

Secondary antibody

### Applications

ELISA

### Cross-Reactivity

Human

### CloneNo number

ARC53376

### Conjugate

HRP

## Background

Enables Fc-gamma receptor I complex binding activity. Involved in antibody-dependent cellular cytotoxicity and complement-dependent cytotoxicity. Located in extracellular space. Part of IgG immunoglobulin complex.

## Recommended Dilutions

### ELISA

Recommended starting concentration is 1 µg/mL. Please optimize the concentration based on your specific assay requirements. For high-ratio antibody dilutions ( $\geq 1:10000$ ) a sequential dilution method is strongly recommended to ensure measurement accuracy.

## Immunogen Information

### Gene ID

3500

### Swiss Prot

P01857,P01859,P01860,P01861

### Immunogen

This information is considered to be commercially sensitive.

### Synonyms

## Contact

☎ | 400-999-6126

✉ | [cn.market@abclonal.com.cn](mailto:cn.market@abclonal.com.cn)

🌐 | [www.abclonal.com.cn](http://www.abclonal.com.cn)

## Product Information

### Source

Rabbit

### Isotype

Horseradish peroxidase conjugated IgG

### Purification

Affinity purification

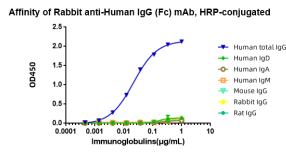
### Storage

Store at -20°C. Avoid freeze / thaw cycles.

Buffer: PBS containing 50% glycerol and 0.2% BSA, preserved with proclin300 or sodium azide (as specified on the Certificate of Analysis), pH 7.3

## Validation Data

---



Dose response curve of HRP-conjugated Rabbit anti-Human IgG (Fc) mAb measured by ELISA. 1 µg/mL of various immunoglobulins were coated to 384-well plate., blank wells without protein were used as negative control (NC). The coated plate was blocked and subsequently incubated with 25 µL of HRP conjugated Rabbit Anti-Human IgG mAb in a 3 fold serial dilution from 1 µg/mL to  $4.5 \times 10^{-1}$  ng/mL, incubation was performed at room temperature for 1 hour. The ELISA result demonstrated that Rabbit Anti-Human IgG has highly specific recognition of Human IgG while no or minimal cross reactivity to Human IgD, Human IgM, Human IgA, Mouse IgG, Rabbit IgG, Rat IgG.