

PE/Cyanine7 Rabbit anti-Mouse IgM mAb

Catalog No.: AS175

Basic Information

Observed MW

Calculated MW

50kDa

Category

Secondary antibody

Applications

FC

Cross-Reactivity

Mouse

CloneNo number

ARC58894

Conjugate

PE-Cy7. Ex:565nm. Em:778nm.

Recommended Dilutions

FC 5 μ l per 10^6 cells in
100 μ l volume

Background

Enables several functions, including antigen binding activity; identical protein binding activity; and immunoglobulin receptor binding activity. Acts upstream of or within several processes, including early endosome to late endosome transport; immunoglobulin mediated immune response; and positive regulation of B cell proliferation. Located in external side of plasma membrane; extracellular space; and perinuclear region of cytoplasm. Part of B cell receptor complex and immunoglobulin complex, circulating. Is expressed in several structures, including brain; hemolymphoid system; and liver. Used to study non-Hodgkin lymphoma and type 1 diabetes mellitus. Human ortholog(s) of this gene implicated in agammaglobulinemia. Orthologous to human IGHM (immunoglobulin heavy constant mu).

Immunogen Information

Gene ID

16019

Swiss Prot

P01872

Immunogen

Recombinant protein (or fragment). This information is considered to be commercially sensitive.

Synonyms

Igm; muH; Igh6; Igh-6; Igh-M

Contact

☎ | 400-999-6126

✉ | cn.market@abclonal.com.cn

🌐 | www.abclonal.com.cn

Product Information

Source

Rabbit

Isotype

IgG

Purification

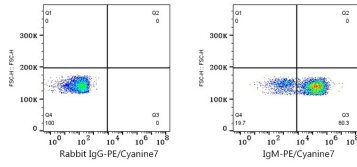
Affinity purification

Storage

Store at 2-8°C. Avoid freeze.

Buffer: PBS with 0.09% Sodium azide, 0.2% BSA, pH7.3.

Validation Data



Flow cytometry: 1×10^6 C57BL/6 mouse splenocytes were surface-stained with PE/Cyanine7 Rabbit IgG isotype control (5 μ l/Test, left) or PE/Cyanine7 Rabbit anti-Mouse IgM mAb (AS175, 5 μ l/Test, right).