

ABflo® 647 Rabbit anti-Rat IgG2b (Fc) mAb

Catalog No.: AS165

Basic Information

Observed MW

Calculated MW

36kDa

Category

Secondary antibody

Applications

FC

Cross-Reactivity

Rat

CloneNo number

ARC72127-ABflo647

Conjugate

ABflo® 647. Ex:648nm. Em:664nm.

Background

Enables antigen binding activity. Acts upstream of or within phagocytosis; positive regulation of immune response; and positive regulation of phagocytosis. Located in extracellular space. Part of immunoglobulin complex, circulating. Orthologous to several human genes including IGHG1 (immunoglobulin heavy constant gamma 1 (G1m marker)); IGHG2 (immunoglobulin heavy constant gamma 2 (G2m marker)); and IGHG3 (immunoglobulin heavy constant gamma 3 (G3m marker)).

Recommended Dilutions

FC 5 µl per 10⁶ cells in
100 µl volume

Immunogen Information

Gene ID

Swiss Prot

P20761

Immunogen

Recombinant protein (or fragment). This information is considered to be commercially sensitive.

Synonyms

IgG2b; Igh-3; gamma2b

Contact

 | 400-999-6126

 | cn.market@abclonal.com.cn

 | www.abclonal.com.cn

Product Information

Source

Rabbit

Isotype

IgG

Purification

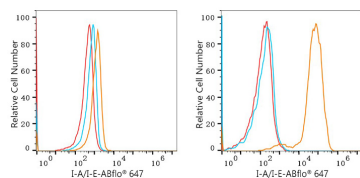
Affinity purification

Storage

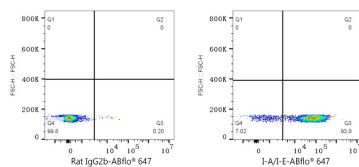
Store at 2-8°C. Avoid freeze.

Buffer: PBS with 0.09% Sodium azide, 0.2% BSA, pH7.3.

Validation Data



Flow cytometry: 1×10^6 Neuro-2a cells (negative control, left) and C57BL/6 mouse splenocytes (right) were surface-stained with Purified Rat anti-mouse I-A/I-E Antibody (2 μ g/ml, orange line) or Rat IgG2b isotype control (2 μ g/ml, blue line), followed by ABflo® 647 Rabbit anti-Rat IgG2b (Fc) mAb (AS165, 5 μ l/Test) staining. Non-fluorescently stained cells were used as blank control (red line).



Flow cytometry: 1×10^6 C57BL/6 mouse splenocytes were surface-stained with Rat IgG2b isotype control (2 μ g/ml, left) or Purified Rat anti-mouse I-A/I-E Antibody (2 μ g/ml, right), followed by ABflo® 647 Rabbit anti-Rat IgG2b (Fc) mAb (AS165, 5 μ l/Test) staining.