

HRP-conjugated Rabbit-Human Lambda Light Chain PolymAb®

Catalog No.: AS162PM

Basic Information

Observed MW

30kDa

Calculated MW

11kDa

Category

Secondary antibody

Applications

WB, ELISA

Cross-Reactivity

Human

CloneNo number

ARC60734_ARC60736

Conjugate

HRP

Recommended Dilutions

WB 1:10000 - 1:40000

ELISA 1:5000-1:10000

Background

Immunoglobulins have the same basic four-polypeptide chain structure, namely two heavy chains (five types) and two light chains (κ , λ ; both have a molecular weight of 22.5 kDa). Kappa and lambda are composed of a variable region and a constant region, which can be easily distinguished by the antigenic characteristics of the constant region.

Immunogen Information

Gene ID

Swiss Prot

P0CG04


Immunogen

Recombinant protein (or fragment). This information is considered to be commercially sensitive.

Synonyms

IGLC1

Contact

 | 400-999-6126

 | cn.market@abclonal.com.cn

 | www.abclonal.com.cn

Product Information

Source

Rabbit

Isotype

IgG

Purification

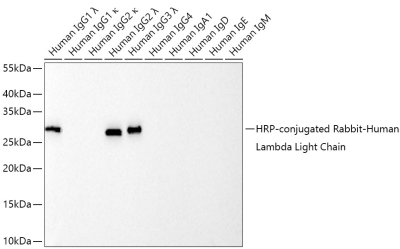
Affinity purification

Storage

Store at -20°C. Avoid freeze / thaw cycles.

Buffer: PBS containing 50% glycerol and 0.05% BSA, preserved with proclin300 or sodium azide (as specified on the Certificate of Analysis), pH 7.3.

Validation Data



Western blot analysis of various lysates using HRP-conjugated Rabbit-Human Lambda Light Chain PolymAb® (AS162PM) at 1:9000 dilution incubated overnight at 4°C.
Lysates/proteins: 10ng per lane.
Blocking buffer: 3% nonfat dry milk in TBST.
Detection: ECL Basic Kit (RM00020).
Negative control (NC): Human IgG2 κ, Human IgG1 κ, Human IgG4 κ, Human IgA, Human IgD, Human IgE, Human IgM.
Exposure time: 30s.