

# HRP-conjugated Rabbit-Human IgE(Fc) PolymAb®

Catalog No.: AS161PM

## Basic Information

### Observed MW

~55kDa

### Calculated MW

47kDa

### Category

Secondary antibody

### Applications

WB, ELISA

### Cross-Reactivity

Human

### Conjugate

HRP

## Background

IgE is the class of antibodies produced in the lungs, skin, and mucous membranes. It may protect against parasite invasion, but it is a major factor in allergic reactions. The antigen-specific IgE interacts with mast cells and eosinophils, triggers the release of histamine, leukotrienes and other substances that lead to the itching, sneezing and congestion of allergies - and the life threatening respiratory distress of asthma and anaphylactic shock

## Recommended Dilutions

**WB** 1:80000 - 1:170000

**ELISA** 1:5000-1:10000

## Immunogen Information

### Gene ID

### Swiss Prot

P01854

### Immunogen

Recombinant protein (or fragment). This information is considered to be commercially sensitive.

### Synonyms

Igh2; IGHE; IGHEP1; Human IgE

## Contact

☎ | 400-999-6126

✉ | [cn.market@abclonal.com.cn](mailto:cn.market@abclonal.com.cn)

🌐 | [www.abclonal.com.cn](http://www.abclonal.com.cn)

## Product Information

### Source

Rabbit

### Isotype

IgG

### Purification

Affinity purification

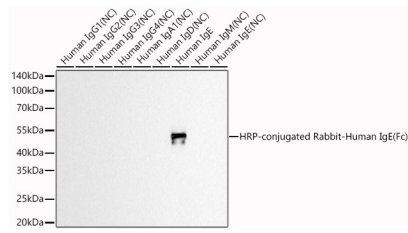
### Storage

Store at -20°C. Avoid freeze / thaw cycles.

Buffer: PBS containing 50% glycerol and 0.05% BSA, preserved with proclin300 or sodium azide (as specified on the Certificate of Analysis), pH 7.3.

## Validation Data

---



Western blot analysis of various lysates using HRP-conjugated Rabbit-Human IgE(Fc) PolymAb® (AS161PM) at 1:170000 dilution incubated overnight at 4°C.

Lysates/proteins: 10ng µg per lane.

Blocking buffer: 3% nonfat dry milk in TBST.

Detection: ECL Basic Kit (RM00020).

Negative control (NC): Human IgG1, Human IgG2, Human IgG3, Human IgG4, Human IgA1, Human IgD, Human IgM, Human IgE

Exposure time: 90s.