

HRP conjugated Rabbit Anti-Mouse IgG1 mAb

Catalog No.: AS115

2 Publications

Basic Information

Observed MW

Refer to figures

Calculated MW

Category

Secondary antibody

Applications

ELISA

Cross-Reactivity

Mouse

CloneNo number

ARC63969-HRP

Conjugate

HRP

Background

Secondary antibodies are affinity-purified antibodies which will work with target-specific primary antibody in the detection, sorting or purification of its specified target. Secondary antibodies offer increased versatility enabling users to use many detection systems (e.g. HRP, AP, fluorescence). They can also provide greater sensitivity through signal amplification as multiple secondary antibodies. Most commonly, secondary antibodies are generated by immunizing the host animal (different from host species of primary antibody) with a pooled population of normal immunoglobulins from the host species of primary antibody and can be further purified and modified (i.e. antibody fragmentation, label conjugation, etc.) to ensure well-characterized specificity to corresponding normal immunoglobulins.

Recommended Dilutions

ELISA 1:5000 -1:10000

Immunogen Information

Gene ID

Swiss Prot

P01868

Immunogen

This information is considered to be commercially sensitive.

Synonyms

Contact

 | 400-999-6126 | cn.market@abclonal.com.cn | www.abclonal.com.cn

Product Information

Source

Rabbit

Isotype

IgG

Purification

Affinity purification

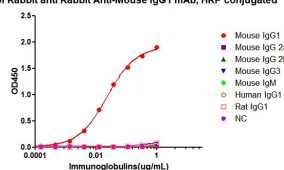
Storage

Store at -20°C. Avoid freeze / thaw cycles.

Buffer: PBS containing 50% glycerol and 0.05% BSA, preserved with proclin300 or sodium azide (as specified on the Certificate of Analysis), pH 7.3.

Validation Data

Affinity of Rabbit anti Rabbit Anti-Mouse IgG1 mAb, HRP conjugated



Dose response curve of HRP conjugated Mouse IgG1 mAb measured by ELISA. 1 $\mu\text{g/mL}$ of various immunoglobulins were coated to 384-well plate, blank wells without protein were used as negative control (NC). The coated plate was blocked and subsequently incubated with 25 μL of HRP conjugated Rabbit Anti-Mouse IgG1 mAb in a 3 fold serial dilution from 1 $\mu\text{g/mL}$ to 6.97×10^{-2} $\mu\text{g/mL}$, incubation was performed at room temperature for 1 hour. The ELISA result demonstrated that Rabbit anti-Mouse IgG1 mAb has highly specific recognition of Mouse IgG1 while no or minimal cross reactivity to Mouse IgG 2a, Mouse IgG 2b, Mouse IgG3, Mouse IgM, Human IgG1, Rat IgG1.