

HRP-conjugated Rabbit anti-Human IgE mAb

Catalog No.: AS104 **4 Publications**

Basic Information

Observed MW

Calculated MW

Category

Secondary antibody

Applications

ELISA

Cross-Reactivity

Human

CloneNo number

ARC60062-HRP

Conjugate

HRP

Background

Recommended Dilutions

ELISA 1:5000-1:10000

Immunogen Information

Gene ID

Swiss Prot

P01854

Immunogen

This information is considered to be commercially sensitive.

Synonyms

Contact

 | 400-999-6126

 | cn.market@abclonal.com.cn

 | www.abclonal.com.cn

Product Information

Source

Rabbit

Isotype

IgG

Purification

Affinity purification

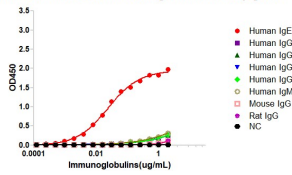
Storage

Store at -20°C. Avoid freeze / thaw cycles.

Buffer: PBS containing 50% glycerol and 0.05% BSA, preserved with proclin300 or sodium azide (as specified on the Certificate of Analysis), pH 7.3.

Validation Data

Affinity of Rabbit anti Rabbit Anti-Human IgE mAb, HRP conjugated



Dose response curve of HRP conjugated Rabbit Anti-Human IgE (Fc) mAb measured by ELISA. 1 µg/mL of various immunoglobulins were coated to 384-well plate., blank wells without protein were used as negative control (NC). The coated plate was blocked and subsequently incubated with 25 µL of HRP conjugated Rabbit Anti-Human IgE (Fc) mAb in a 2 fold serial dilution from 2 µg/mL to 6.1×10^{-5} µg/mL, incubation was performed at room temperature for 1 hour. The ELISA result demonstrated that Rabbit Anti-Human IgE (Fc) mAb has highly specific recognition of Human IgE while no or minimal cross reactivity to Human IgG1, Human IgG2, Human IgG3, Human IgG4, Human IgM, Mouse IgG, Rat IgG.