

HRP-conjugated Rabbit anti-Human IgG4 mAb

Catalog No.: AS102

Basic Information

Observed MW

Calculated MW

Category

Secondary antibody

Applications

ELISA

Cross-Reactivity

Human

CloneNo number

ARC60037-02-HRP

Conjugate

HRP

Background

Recommended Dilutions

ELISA 1:5000-1:10000

Immunogen Information

Gene ID

Swiss Prot

P01861

Immunogen

This information is considered to be commercially sensitive.

Synonyms

Contact

 | 400-999-6126

 | cn.market@abclonal.com.cn

 | www.abclonal.com.cn

Product Information

Source

Rabbit

Isotype

IgG

Purification

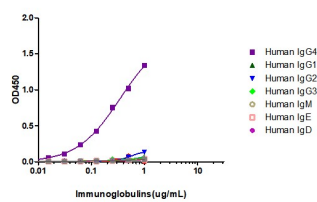
Affinity purification

Storage

Store at -20°C. Avoid freeze / thaw cycles.

Buffer: PBS containing 50% glycerol and 0.05% BSA, preserved with proclin300 or sodium azide (as specified on the Certificate of Analysis), pH 7.3.

Affinity of Rabbit Anti-Human IgG4 mAb, HRP conjugated



Dose response curve of HRP conjugated Rabbit Anti-Human IgG4 mAb measured by ELISA. 1 µg/mL of various immunoglobulins were coated to 384-well plate., blank wells without protein were used as negative control (NC). The coated plate was blocked and subsequently incubated with 25 µL of HRP conjugated Rabbit Anti-Human IgG4 mAb in a 2 fold serial dilution from 1 µg/mL to 7.8*10⁻³ pg/mL, incubation was performed at room temperature for 1 hour. The ELISA result demonstrated that Rabbit Rabbit Anti-Human IgG4 has highly specific recognition of Human IgG4 while no or minimal cross reactivity to Human IgG1 Human IgG2 Human IgG3 Human IgM Human IgE Human IgD.