

# HRP-conjugated Rabbit anti-Goat IgG Fab mAb

Catalog No.: AS097

## Basic Information

**Observed MW**

**Calculated MW**

**Category**

Secondary antibody

**Applications**

WB, ELISA

**Cross-Reactivity**

Goat

**CloneNo number**

ARC57078-HRP

**Conjugate**

HRP

## Background

## Recommended Dilutions

**WB** 1:500-1:64000

**ELISA** 1:5000-1:10000

## Immunogen Information

**Gene ID**

**Swiss Prot**

**Immunogen**

This information is considered to be commercially sensitive.

**Synonyms**

## Contact

 | 400-999-6126

 | [cn.market@abclonal.com.cn](mailto:cn.market@abclonal.com.cn)

 | [www.abclonal.com.cn](http://www.abclonal.com.cn)

## Product Information

**Source**

Rabbit

**Isotype**

IgG

**Purification**

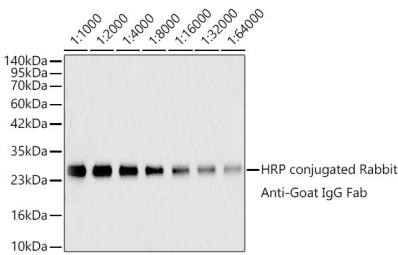
Affinity purification

**Storage**

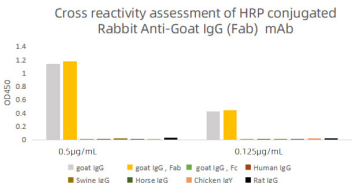
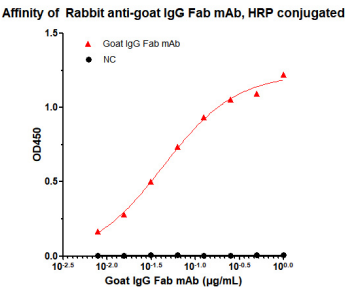
Store at -20°C. Avoid freeze / thaw cycles.

Buffer: PBS containing 50% glycerol and 0.05% BSA, preserved with proclin300 or sodium azide (as specified on the Certificate of Analysis), pH 7.3.

Validation Data



Western blot analysis of recombinant goat IgG Fab protein using HRP-conjugated Rabbit anti-Goat IgG Fab mAb(AS097) at 1:500-1:64000 dilution. Blot was incubated with the HRP conjugated antibody in the Blocking buffer (3% non-fat dry milk in TBST) at room temperature for 1 hour before detection using Enhanced chemiluminescence. Lysates/proteins: Lane 1: molecular weight marker; Lanes 2-9: 100ng goat IgG Fab recombinant Protein per lane. Detection: ECL Basic Kit (RM00020). Exposure time: 90s



Dose response curve of HRP conjugated Rabbit Anti-Goat IgG Fab mAb measured by ELISA. 25 ng of Goat IgG Fab recombinant protein was coated in 384-well plate, blank wells without protein were used as negative control (NC). 25 µL of HRP conjugated Rabbit Anti-Goat IgG Fab mAb in a 2 fold serial dilution from 1 µg/mL to 7.8 pg/mL, incubation was performed at room temperature for 1 hour. EC50 value (4.27×10<sup>-2</sup> µg/mL) were calculated using 4 parameter logistic regression.

Cross reactivity to various IgGs of HRP conjugated Rabbit Anti-Goat IgG Fab mAb was examined ELISA. 1 µg/mL of various immunoglobulins were coated to 384-well plate. Then the plate was blocked and incubated with 25 µL of HRP conjugated Rabbit Anti-Goat IgG Fab mAb , 0.5 µg/mL and 0.125 µg/mL at room temperature for 1 hour. The ELISA result demonstrated that Rabbit anti-goat Fab antibody has highly specific recognition of goat IgG (H+L) and Fab fragments, while no or minimal cross reactivity to goat IgG Fc, Human IgG, Swine IgG, Horse IgG, Chicken IgY, and Rat IgG.