

HRP-conjugated Donkey anti-Rabbit IgG (H+L)

Catalog No.: AS038

19 Publications

Basic Information

Observed MW

42kDa

Calculated MW**Category**

Secondary antibody

Applications

WB, IHC-P

Cross-Reactivity**Conjugate**

HRP

Background

Secondary antibodies are affinity-purified antibodies which will work with target-specific primary antibody in the detection, sorting or purification of its specified target. Secondary antibodies offer increased versatility enabling users to use many detection systems (e.g. HRP, AP, fluorescence). They can also provide greater sensitivity through signal amplification as multiple secondary antibodies. Most commonly, secondary antibodies are generated by immunizing the host animal (different from host species of primary antibody) with a pooled population of normal immunoglobulins from the host species of primary antibody and can be further purified and modified (i.e. antibody fragmentation, label conjugation, etc.) to ensure well-characterized specificity to corresponding normal immunoglobulins.

Recommended Dilutions

WB 1:5000 - 1:100000

IHC-P 1:50 - 1:200

Immunogen Information

Gene ID**Swiss Prot****Immunogen**

This information is considered to be commercially sensitive.

Synonyms

Contact

 | 400-999-6126 | cn.market@abclonal.com.cn | www.abclonal.com.cn

Product Information

Source

Donkey

IsotypeHorseradish peroxidase
conjugated IgG**Purification**

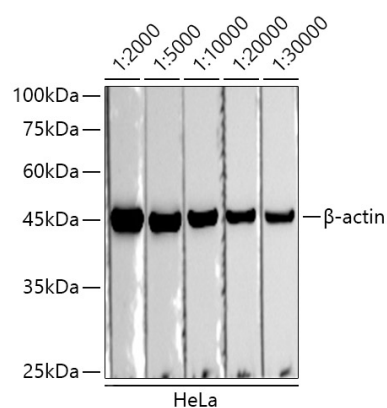
Affinity purification

Storage

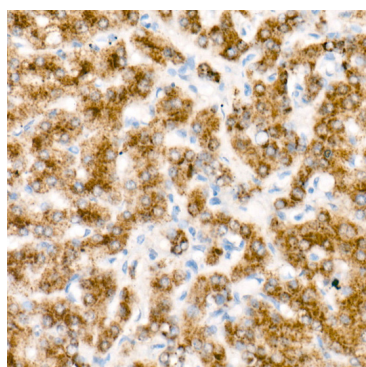
Store at -20°C. Avoid freeze / thaw cycles.

Buffer: PBS with 0.75% BSA, 50% glycerol, pH 7.3.

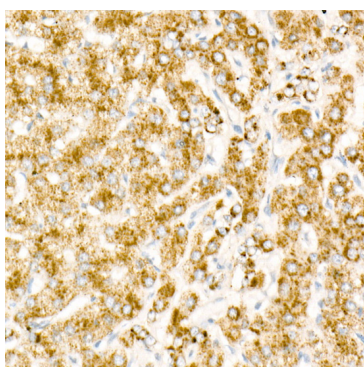
Validation Data



Western blot analysis of lysates from HeLa cells, using β -actin antibody as the primary antibody.
Secondary antibody: HRP Donkey Anti-Rabbit IgG (H+L) antibody (AS038) at 1:2000-1:30000 dilution
Lysates/proteins: 25 μ g per lane.
Blocking buffer: 3% nonfat dry milk in TBST.
Detection: ECL Basic Kit (RM00020).
Exposure time: 30s.



Immunohistochemistry analysis of paraffin-embedded Human liver (primary antibody is acox1) using HRP Donkey Anti-Rabbit IgG (H+L) (AS038) at dilution of 1:100 (40x lens). High pressure antigen retrieval performed with 0.01M Citrate buffer (pH 6.0) prior to IHC staining.



Immunohistochemistry analysis of paraffin-embedded Human liver (the primary antibody is acox1, And the control secondary antibody is stained) using HRP Donkey Anti-Rabbit IgG (H+L) (AS038) at dilution of 1:100 (40x lens). High pressure antigen retrieval performed with 0.01M Citrate buffer (pH 6.0) prior to IHC staining.