

HRP-conjugated Donkey anti-Mouse IgG (H+L)

Catalog No.: AS033

7 Publications

Basic Information

Observed MW

25kDa(Light chain),55kDa(Heavy chain)/36kDa

Calculated MW

Category

Secondary antibody

Applications

WB,IHC-P

Cross-Reactivity

Mouse

Conjugate

HRP

Background

Secondary antibodies are affinity-purified antibodies which will work with target-specific primary antibody in the detection, sorting or purification of its specified target. Secondary antibodies offer increased versatility enabling users to use many detection systems (e.g. HRP, AP, fluorescence). They can also provide greater sensitivity through signal amplification as multiple secondary antibodies. Most commonly, secondary antibodies are generated by immunizing the host animal (different from host species of primary antibody) with a pooled population of normal immunoglobulins from the host species of primary antibody and can be further purified and modified (i.e. antibody fragmentation, label conjugation, etc.) to ensure well-characterized specificity to corresponding normal immunoglobulins.

Recommended Dilutions

WB 1:10000 - 1:20000

IHC-P 1:500 - 1:1000

Immunogen Information

Gene ID

Swiss Prot

Immunogen

This information is considered to be commercially sensitive.

Synonyms

Contact

 | 400-999-6126 | cn.market@abclonal.com.cn | www.abclonal.com.cn

Product Information

Source

Donkey

Isotype

Horseradish peroxidase
conjugated IgG

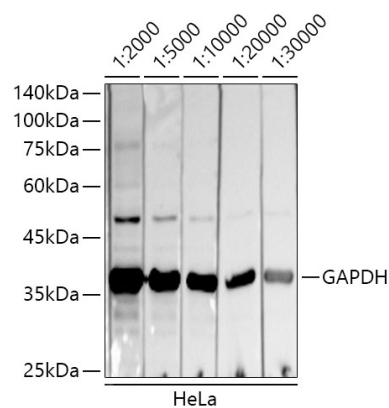
Purification

Affinity purification

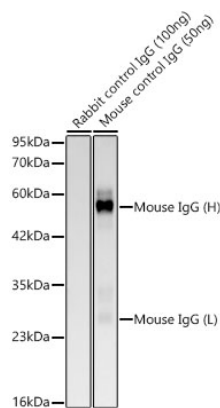
Storage

Store at -20°C. Avoid freeze / thaw cycles.
Buffer: PBS with 0.75% BSA,50% glycerol,pH7.3.

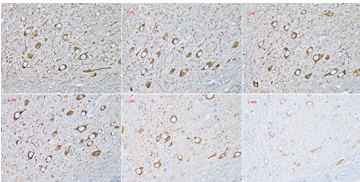
Validation Data



Western blot analysis of lysates from HeLa cells, using GAPDH antibody as the primary antibody.
Secondary antibody:HRP Donkey Anti-Mouse IgG (H+L)(AS033) at 1:10000 dilution.
Lysates/proteins: 25 µg per lane.
Blocking buffer: 3% nonfat dry milk in TBST.
Detection: ECL Basic Kit (RM00020).
Exposure time: 20s.



Western blot analysis of recombinant Mouse control IgG Protein using HRP Donkey Anti-Mouse IgG (H+L)(AS033) at 1:10000 dilution.
Secondary antibody:HRP Donkey Anti-Mouse IgG (H+L)(AS033) at 1:10000 dilution.
Lysates/proteins: 100ng/50ng per lane.
Blocking buffer: 3% nonfat dry milk in TBST.
Detection: ECL Basic Kit (RM00020).
Exposure time: 20s.



Immunohistochemistry analysis of paraffin-embedded Mouse brain using HRP Donkey Anti-Mouse IgG (H+L) (AS033) at dilution of 1:20 - 1:800 (40x lens). High pressure antigen retrieval performed with 0.01M Citrate buffer (pH 6.0) prior to IHC staining.