

HRP-conjugated Goat anti-Human IgG (H+L)

Catalog No.: AS002

24 Publications

Basic Information

Observed MW

25kDa,55kDa

Calculated MW**Category**

Secondary antibody

Applications

WB

Cross-Reactivity**Conjugate**

HRP

Background

Secondary antibodies are affinity-purified antibodies which will work with target-specific primary antibody in the detection, sorting or purification of its specified target. Secondary antibodies offer increased versatility enabling users to use many detection systems (e.g. HRP, AP, fluorescence). They can also provide greater sensitivity through signal amplification as multiple secondary antibodies. Most commonly, secondary antibodies are generated by immunizing the host animal (different from host species of primary antibody) with a pooled population of normal immunoglobulins from the host species of primary antibody and can be further purified and modified (i.e. antibody fragmentation, label conjugation, etc.) to ensure well-characterized specificity to corresponding normal immunoglobulins.

Recommended Dilutions

WB 1:1000 - 1:10000

Immunogen Information

Gene ID**Swiss Prot****Immunogen**

This information is considered to be commercially sensitive.

Synonyms

Contact

 | 400-999-6126 | cn.market@abclonal.com.cn | www.abclonal.com.cn

Product Information

Source

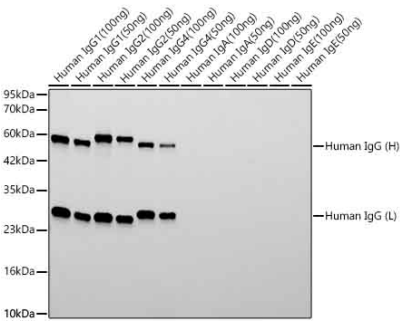
Goat

IsotypeHorseradish peroxidase
conjugated IgG**Purification**

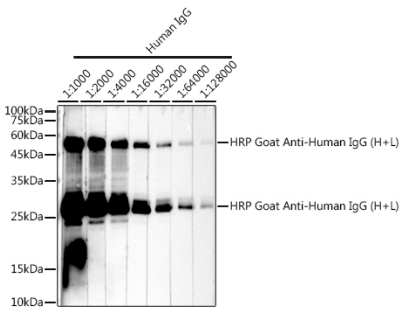
Affinity purification

StorageStore at -20°C. Avoid freeze / thaw cycles.
Buffer: PBS with 0.75% BSA, 50% glycerol, pH 7.3.

Validation Data



Western blot analysis of recombinant Human immunoglobulin using HRP Goat Anti-Human IgG (H+L) (AS002) at 1:10000 dilution incubated overnight at 4°C.
Lysates/proteins: 50ng - 100ng per lane.
Blocking buffer: 3% nonfat dry milk in TBST.
Detection: ECL Basic Kit (RM00020).
Exposure time: 20s.



Western blot analysis of lysates from Human IgG, using HRP Goat Anti-Human IgG (H+L) (AS002) at 1:2000 dilution.
Lysates/proteins: 25µg per lane.
Blocking buffer: 3% nonfat dry milk in TBST.
Detection: ECL Basic Kit (RM00020).
Exposure time: 90s.