

Phospho-ATR-S428 Rabbit mAb

Catalog No.: AP1582 **Recombinant**

Basic Information

Observed MW

300kDa

Calculated MW

301kDa

Category

Primary antibody

Applications

WB,IF/ICC,IHC-P,ELISA

Cross-Reactivity

Human

CloneNo number

ARC75709

Background

The protein encoded by this gene is a serine/threonine kinase and DNA damage sensor, activating cell cycle checkpoint signaling upon DNA stress. The encoded protein can phosphorylate and activate several proteins involved in the inhibition of DNA replication and mitosis, and can promote DNA repair, recombination, and apoptosis. This protein is also important for fragile site stability and centrosome duplication. Defects in this gene are a cause of Seckel syndrome 1.

Recommended Dilutions

WB 1:1000 - 1:2000

IF/ICC 1:200 - 1:400

IHC-P 1:200 - 1:800

ELISA Recommended starting concentration is 1 µg/mL. Please optimize the concentration based on your specific assay requirements.

Immunogen Information

Gene ID

545

Swiss Prot

Q13535

Immunogen

Synthetic peptide. This information is considered to be commercially sensitive.

Synonyms

FRP1; MEC1; SCKL; FCTCS; SCKL1; Phospho-ATR-S428

Contact

☎ | 400-999-6126

✉ | cn.market@abclonal.com.cn

🌐 | www.abclonal.com.cn

Product Information

Source

Rabbit

Isotype

IgG

Purification

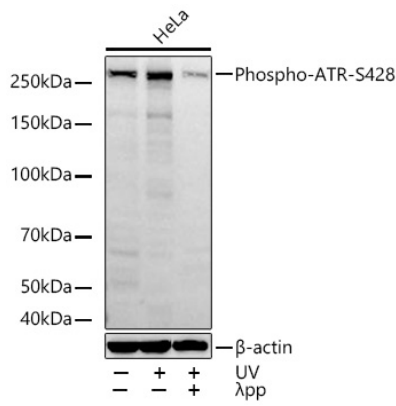
Affinity purification

Storage

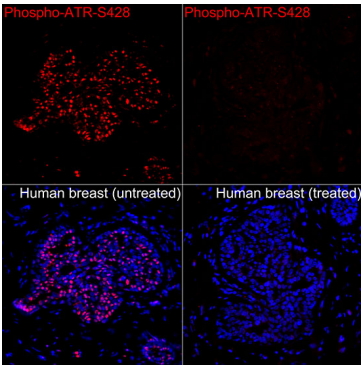
Store at -20°C. Avoid freeze / thaw cycles.

Buffer: PBS with 0.09% Sodium azide,0.05% BSA,50% glycerol,pH7.3.

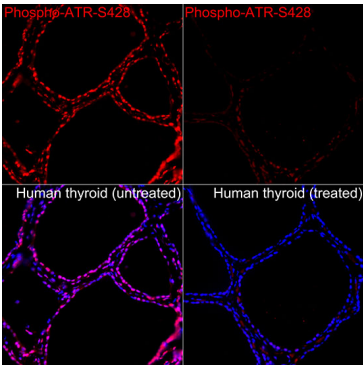
Validation Data



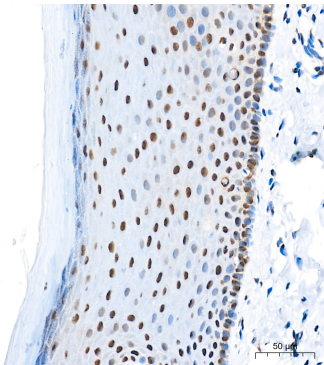
Western blot analysis of lysates from HeLa cells using Phospho-ATR-S428 Rabbit mAb (AP1582) at 1:1000 dilution incubated at room temperature for 1.5 hours. HeLa cells were treated with UV at room temperature for 15-30 minutes and λ-pp (1 mM) for 1 hour. Secondary antibody: HRP-conjugated Goat anti-Rabbit IgG (H+L) (AS014) at 1:10000 dilution. Lysates/proteins: 30 µg per lane. Blocking buffer: 3% nonfat dry milk in TBST. Detection: ECL Basic Kit (RM00020). Exposure time: 45s.



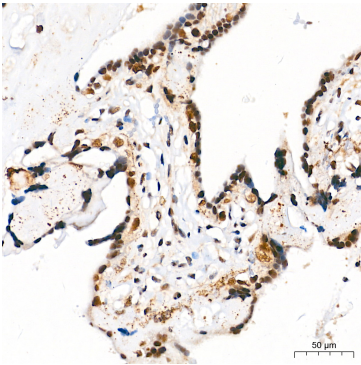
Immunofluorescence analysis of Human breast tissue (untreated) and Human breast tissue (treated with λpp) using Phospho-ATR-S428 Rabbit mAb (AP1582) at a dilution of 1:200 (40x lens). Secondary antibody: Cy3-conjugated Goat anti-Rabbit IgG (H+L)(AS007) at 1:500 dilution. Blue: DAPI for nuclear staining. High pressure antigen retrieval performed with 0.01M Citrate Buffer (pH 6.0) prior to IF staining.



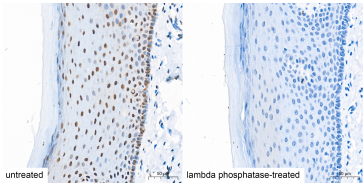
Immunofluorescence analysis of Human thyroid tissue (untreated) and Human thyroid tissue (treated with λpp) using Phospho-ATR-S428 Rabbit mAb (AP1582) at a dilution of 1:200 (40x lens). Secondary antibody: Cy3-conjugated Goat anti-Rabbit IgG (H+L)(AS007) at 1:500 dilution. Blue: DAPI for nuclear staining. High pressure antigen retrieval performed with 0.01M Citrate Buffer (pH 6.0) prior to IF staining.



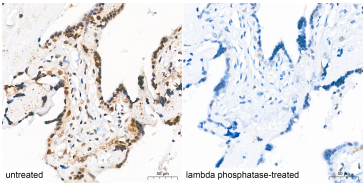
Immunohistochemistry analysis of paraffin-embedded Human cervix tissue using Phospho-ATR-S428 Rabbit mAb (AP1582) at a dilution of 1:600 (40x lens). High pressure antigen retrieval performed with 0.01M Citrate Buffer(pH 6.0) prior to IHC staining.



Immunohistochemistry analysis of paraffin-embedded Human placenta tissue using Phospho-ATR-S428 Rabbit mAb (AP1582) at a dilution of 1:600 (40x lens). High pressure antigen retrieval performed with 0.01M Citrate Buffer(pH 6.0) prior to IHC staining.



Immunohistochemistry analysis of paraffin-embedded Human cervix(untreated) and Human cervix(lambda phosphatase-treated) tissue using Phospho-ATR-S428 Rabbit mAb (AP1582) at a dilution of 1:600 (40x lens). High pressure antigen retrieval performed with 0.01M Citrate Buffer (pH 6.0) prior to IHC staining.



Immunohistochemistry analysis of paraffin-embedded Human placenta(untreated) and Human placenta(lambda phosphatase-treated) tissue using Phospho-ATR-S428 Rabbit mAb (AP1582) at a dilution of 1:600 (40x lens). High pressure antigen retrieval performed with 0.01M Citrate Buffer (pH 6.0) prior to IHC staining.