

# Phospho-STAT5-Y694 Rabbit mAb

Catalog No.: AP1563 **Recombinant**

## Basic Information

### Observed MW

90kDa

### Calculated MW

90kDa

### Category

Primary antibody

### Applications

WB, IHC-P, IF/ICC, ELISA

### Cross-Reactivity

Human

### CloneNo number

ARC71965

## Background

Carries out a dual signal transduction and activation of transcription. Mediates cellular responses to the cytokine KITLG/SCF and other growth factors. Mediates cellular responses to ERBB4. May mediate cellular responses to activated FGFR1, FGFR2, FGFR3 and FGFR4. Binds to the GAS element and activates PRL-induced transcription. Regulates the expression of milk proteins during lactation.

## Recommended Dilutions

**WB** 1:12000 - 1:72000

**IHC-P** 1:2000 - 1:8000

**IF/ICC** 1:200 - 1:800

**ELISA** Recommended starting concentration is 1 µg/mL. Please optimize the concentration based on your specific assay requirements.

## Immunogen Information

### Gene ID

6776/6777

### Swiss Prot

P42229/P51692

### Immunogen

Synthetic peptide. This information is considered to be commercially sensitive.

### Synonyms

MGF; STAT5; stat5a/stat5b; Phospho-STAT5-Y694

## Contact

☎ | 400-999-6126

✉ | [cn.market@abclonal.com.cn](mailto:cn.market@abclonal.com.cn)

🌐 | [www.abclonal.com.cn](http://www.abclonal.com.cn)

## Product Information

### Source

Rabbit

### Isotype

IgG

### Purification

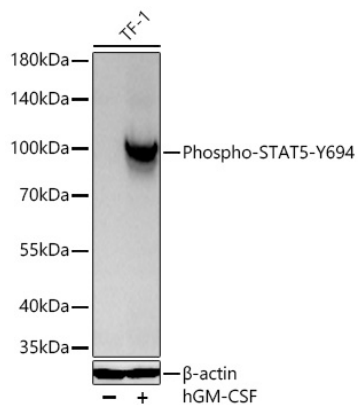
Affinity purification

### Storage

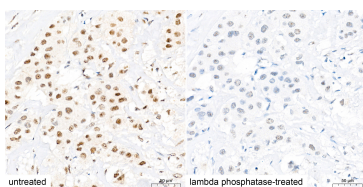
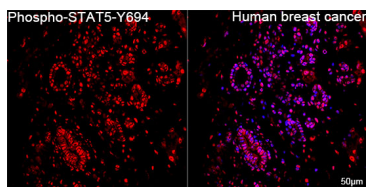
Store at -20°C. Avoid freeze / thaw cycles.

Buffer: PBS with 0.09% Sodium azide, 0.05% BSA, 50% glycerol, pH7.3.

## Validation Data



Western blot analysis of lysates from TF-1 cells using Phospho-STAT5-Y694 Rabbit mAb (AP1563) at 1:12000 dilution incubated at room temperature for 1.5 hours. TF-1 cells were treated with hGM-CSF (100 ng/mL) at 37°C for 10 minutes after serum-starvation overnight.  
Secondary antibody: HRP-conjugated Goat anti-Rabbit IgG (H+L) (AS014) at 1:10000 dilution.  
Lysates/proteins: 30 µg per lane.  
Blocking buffer: 3 % nonfat dry milk in TBST.  
Detection: ECL Basic Kit (RM00020).  
Exposure time: 5s.



Confocal imaging of paraffin-embedded Human breast cancer tissue using Phospho-STAT5-Y694 Rabbit mAb (AP1563, dilution 1:200) followed by a further incubation with Cy3 Goat Anti-Rabbit IgG (H+L) (AS007, dilution 1:500) (Red). DAPI was used for nuclear staining (Blue). High pressure antigen retrieval performed with 0.01M Citrate Buffer (pH 6.0) prior to IF staining. Objective: 40x.

Immunohistochemistry analysis of paraffin-embedded Human breast cancer tissue using Phospho-STAT5-Y694 Rabbit mAb (AP1563) at a dilution of 1:6000 (40x lens). High pressure antigen retrieval performed with 0.01M Tris-EDTA Buffer (pH 9.0) prior to IHC staining.