

Phospho-YWHAZ -Ser58+YWHAH -Ser59+YWHAG-Ser59+YWHAB -Ser60 Rabbit mAb

Catalog No.: AP1561 **Recombinant**

Basic Information

Observed MW

28kDa

Calculated MW

28kDa

Category

Primary antibody

Applications

WB, ELISA

Cross-Reactivity

Human, Mouse

CloneNo number

ARC73529

Background

This gene product belongs to the 14-3-3 family of proteins which mediate signal transduction by binding to phosphoserine-containing proteins. This highly conserved protein family is found in both plants and mammals, and this protein is 99% identical to the mouse, rat and sheep orthologs. The encoded protein interacts with IRS1 protein, suggesting a role in regulating insulin sensitivity. Several transcript variants that differ in the 5' UTR but that encode the same protein have been identified for this gene.

Recommended Dilutions

WB 1:6500 - 1:13000

ELISA Recommended starting concentration is 1 µg/mL. Please optimize the concentration based on your specific assay requirements.

Immunogen Information

Gene ID

7534/7533/ 7532/7529

Swiss Prot

P63104/Q04917/P61981/P31946

Immunogen

Synthetic peptide. This information is considered to be commercially sensitive.

Synonyms

HEL4; YWHAD; KCIP-1; HEL-S-3; POPCHAS; HEL-S-93; 14-3-3-zeta; YWHA1; 14-3-3GAMMA; DEE56; EIEE56; PPP1R170; GW128; HEL-S-1; HS1; KCIP-1; YWHAA;

Contact

☎ | 400-999-6126

✉ | cn.market@abclonal.com.cn

🌐 | www.abclonal.com.cn

Product Information

Source

Rabbit

Isotype

IgG

Purification

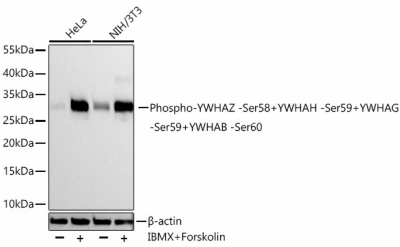
Affinity purification

Storage

Store at -20°C. Avoid freeze / thaw cycles.

Buffer: PBS with 0.09% Sodium azide, 0.05% BSA, 50% glycerol, pH7.3.

Validation Data



Western blot analysis of various lysates using Phospho-YWHAZ -Ser58+YWHAH -Ser59+YWHAG-Ser59+YWHAB -Ser60 Rabbit mAb (AP1561) at 1:13000 dilution incubated overnight at 4°C. HeLa cells and NIH/3T3 cells were treated with IBMX (50μM) and Forskolin (10 μM) at 37°C for 30 minutes. Secondary antibody: HRP-conjugated Goat anti-Rabbit IgG (H+L) (AS014) at 1:10000 dilution. Lysates/proteins: 30 μg per lane. Blocking buffer: 3% nonfat dry milk in TBST. Detection: ECL Basic Kit (RM00020). Exposure time: 90s.