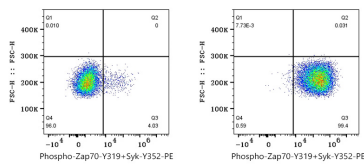
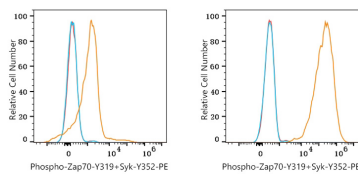


Validation Data



Flow cytometry: 1×10^6 EL4 cells (untreated, left) and EL4 cells (treated with H₂O₂ and pervanadate, right) were intracellularly-stained with PE Rabbit anti-Human/Mouse Phospho-Zap70-Y319+Syk-Y352 mAb (AP1553, 5 μ l/Test, orange line) or PE Rabbit IgG isotype control (A24172, 5 μ l/Test, blue line). Non-fluorescently stained cells were used as blank control (red line).

Flow cytometry: 1×10^6 EL4 cells (untreated, left) and EL4 cells (treated with H₂O₂ and pervanadate, right) were intracellularly-stained with PE Rabbit anti-Human/Mouse Phospho-Zap70-Y319+Syk-Y352 mAb (AP1553, 2 μ l/Test).