

Phospho-PKC alpha-T410+PKC delta-T410 Rabbit mAb

Catalog No.: AP1506

Recombinant

Basic Information

Observed MW

76-80kDa

Calculated MW

76kDa/77kDa

Category

Primary antibody

Applications

WB, ELISA

Cross-Reactivity

Human

CloneNo number

ARC63068

Background

Protein kinase C (PKC) is a family of serine- and threonine-specific protein kinases that can be activated by calcium and the second messenger diacylglycerol. PKC family members phosphorylate a wide variety of protein targets and are known to be involved in diverse cellular signaling pathways. PKC family members also serve as major receptors for phorbol esters, a class of tumor promoters. Each member of the PKC family has a specific expression profile and is believed to play a distinct role in cells. The protein encoded by this gene is one of the PKC family members. This kinase has been reported to play roles in many different cellular processes, such as cell adhesion, cell transformation, cell cycle checkpoint, and cell volume control. Knockout studies in mice suggest that this kinase may be a fundamental regulator of cardiac contractility and Ca(2+) handling in myocytes.

Recommended Dilutions

WB 1:1000 - 1:3000

ELISA Recommended starting concentration is 1 µg/mL. Please optimize the concentration based on your specific assay requirements.

Immunogen Information

Gene ID

5578/5580

Swiss Prot

P17252/Q05655

Immunogen

Synthetic peptide. This information is considered to be commercially sensitive.

Synonyms

AAG6; PKCA; PRKACA; PKCI+/-; PKCalpha; PKC-alpha; Phospho-PKC alpha-T410+PKC delta-T410

Contact

 | 400-999-6126 | cn.market@abclonal.com.cn | www.abclonal.com.cn

Product Information

Source

Rabbit

Isotype

IgG

Purification

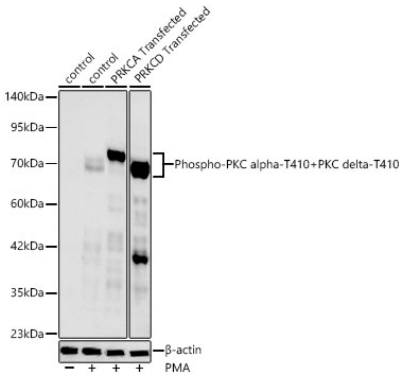
Affinity purification

Storage

Store at -20°C. Avoid freeze / thaw cycles.

Buffer: PBS containing 50% glycerol and 0.05% BSA, preserved with proclin300 or sodium azide (as specified on the Certificate of Analysis), pH 7.3.

Validation Data



Western blot analysis of lysates from wild type (WT) 293F cells were treated with PMA 293F cells were treated with PMA after transfected with PRKCA and 293F cells were treated with PMA after transfected with PRKCD using Phospho-PKC alpha-T410+PKC delta-T410 Rabbit mAb (AP1506) at 1:2000 dilution. 293F 293F-PRKCA-Transfected and 293F-PRKCD-Transfected cells were treated with PMA (200 nM) at 37°C for 30 minutes. Secondary antibody: HRP-conjugated Goat anti-Rabbit IgG (H+L) (AS014) at 1:10000 dilution. Lysates/proteins: 25µg per lane. Blocking buffer: 3% nonfat dry milk in TBST. Detection: ECL Basic Kit (RM00020). Exposure time: 90s.