

Phospho-AKT1S1/PRAS40-T246 Rabbit mAb

Catalog No.: AP1493 **Recombinant**

Basic Information

Observed MW

40 kDa

Calculated MW

27 kDa

Category

Primary antibody

Applications

WB,ELISA

Cross-Reactivity

Human

CloneNo number

ARC66323

Background

AKT1S1 is a proline-rich substrate of AKT (MIM 164730) that binds 14-3-3 protein (see YWHAH, MIM 113508) when phosphorylated (Kovacina et al., 2003 [PubMed 12524439]).

Recommended Dilutions

WB 1:2000 - 1:9000

ELISA Recommended starting concentration is 1 µg/mL. Please optimize the concentration based on your specific assay requirements.

Immunogen Information

Gene ID

84335

Swiss Prot

Q96B36

Immunogen

Synthetic peptide. This information is considered to be commercially sensitive.

Synonyms

Lobe; PRAS40

Contact

 | 400-999-6126

 | cn.market@abclonal.com.cn

 | www.abclonal.com.cn

Product Information

Source

Rabbit

Isotype

IgG

Purification

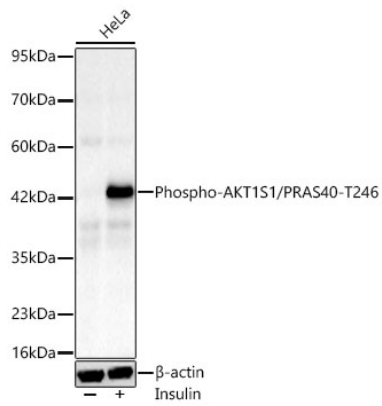
Affinity purification

Storage

Store at -20°C. Avoid freeze / thaw cycles.

Buffer: PBS with 0.09% Sodium azide,0.05% BSA,50% glycerol,pH7.3.

Validation Data



Western blot analysis of lysates from HeLa cells using Phospho-AKT1S1/PRAS40-T246 Rabbit mAb (AP1493) at 1:8000 dilution incubated overnight at 4°C. HeLa cells were treated with Insulin (50 nM) at 37°C for 5 minutes after serum-starvation overnight.
Secondary antibody: HRP-conjugated Goat anti-Rabbit IgG (H+L) (AS014) at 1:10000 dilution.
Lysates/proteins: 30 µg per lane.
Blocking buffer: 3% nonfat dry milk in TBST.
Detection: ECL Basic Kit (RM00020).
Exposure time: 60 s.