

Phospho-RPA2-Ser33 Rabbit mAb

Catalog No.: AP1479 **Recombinant**

Basic Information

Observed MW

32kDa/36kDa

Calculated MW

29kDa

Category

Primary antibody

Applications

WB, IHC-P, IF/ICC, ELISA

Cross-Reactivity

Mouse, Rat

CloneNo number

ARC66738

Background

This gene encodes a subunit of the heterotrimeric Replication Protein A (RPA) complex, which binds to single-stranded DNA (ssDNA), forming a nucleoprotein complex that plays an important role in DNA metabolism, being involved in DNA replication, repair, recombination, telomere maintenance, and co-ordinating the cellular response to DNA damage through activation of the ataxia telangiectasia and Rad3-related protein (ATR) kinase. The RPA complex protects single-stranded DNA from nucleases, prevents formation of secondary structures that would interfere with repair, and co-ordinates the recruitment and departure of different genome maintenance factors. The heterotrimeric complex has two different modes of ssDNA binding, a low-affinity and high-affinity mode, determined by which oligonucleotide/oligosaccharide-binding (OB) domains of the complex are utilized, and differing in the length of DNA bound. This subunit contains a single OB domain that participates in high-affinity DNA binding and also contains a winged helix domain at its carboxy terminus, which interacts with many genome maintenance proteins. Post-translational modifications of the RPA complex also plays a role in co-ordinating different damage response pathways.

Recommended Dilutions

WB 1:500 - 1:1000**IHC-P** 1:500 - 1:1000**IF/ICC** 1:50-1:200

ELISA Recommended starting concentration is 1 µg/mL. Please optimize the concentration based on your specific assay requirements.

Immunogen Information

Gene ID

6118

Swiss Prot

P15927

Immunogen

Synthetic peptide. This information is considered to be commercially sensitive.

Synonyms

REPA2; RPA32; RP-A p32; RP-A p34

Contact

 | 400-999-6126 | cn.market@abclonal.com.cn | www.abclonal.com.cn

Product Information

Source

Rabbit

Isotype

IgG

Purification

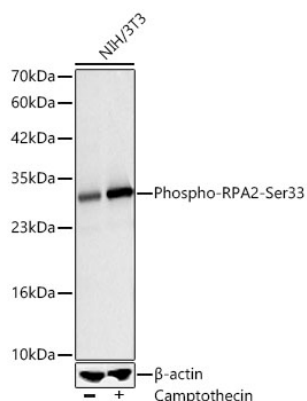
Affinity purification

Storage

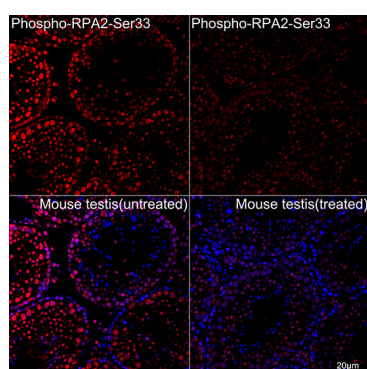
Store at -20°C. Avoid freeze / thaw cycles.

Buffer: PBS containing 50% glycerol and 0.05% BSA, preserved with proclin300 or sodium azide (as specified on the Certificate of Analysis), pH 7.3.

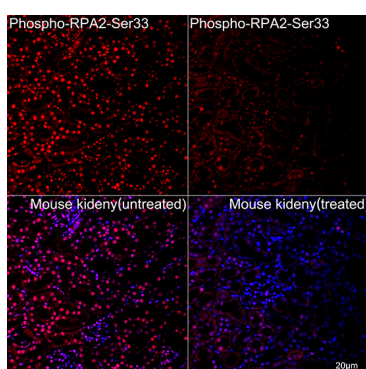
Validation Data



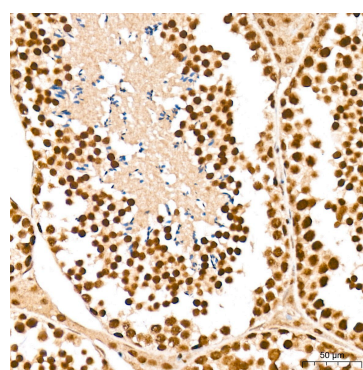
Western blot analysis of lysates from NIH/3T3 cells using Phospho-RPA2-Ser33 Rabbit mAb (AP1479) at 1:1000 dilution. NIH/3T3 cells were treated with Camptothecin (1 μ M) at 37°C for 1 hour. Secondary antibody: HRP-conjugated Goat anti-Rabbit IgG (H+L) (AS014) at 1:10000 dilution. Lysates/proteins: 30 μ g per lane. Blocking buffer: 3% nonfat dry milk in TBST. Detection: ECL Basic Kit (RM00020). Exposure time: 10s.



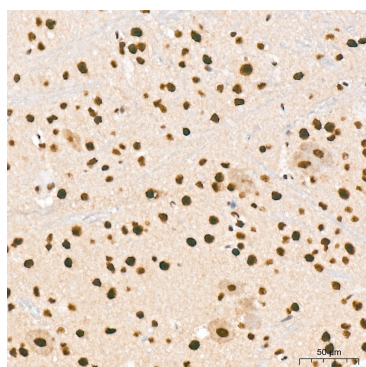
Confocal imaging of paraffin-embedded Mouse testis and Mouse testis treated with λ pp tissue using Phospho-RPA2-Ser33 Rabbit mAb (AP1479, dilution 1:200) followed by a further incubation with Cy3 Goat Anti-Rabbit IgG (H+L) (AS007, dilution 1:500) (Red). DAPI was used for nuclear staining (Blue). High pressure antigen retrieval performed with 0.01M Citrate Buffer (pH 6.0) prior to IF staining. Objective: 40x.



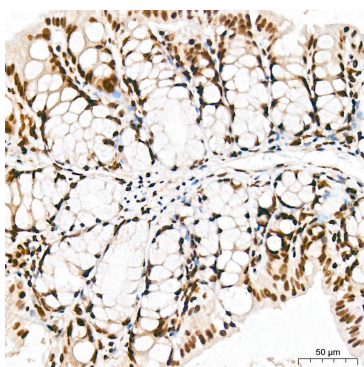
Confocal imaging of paraffin-embedded Mouse kidney and Mouse kidney treated with λ pp tissue using Phospho-RPA2-Ser33 Rabbit mAb (AP1479, dilution 1:200) followed by a further incubation with Cy3 Goat Anti-Rabbit IgG (H+L) (AS007, dilution 1:500) (Red). DAPI was used for nuclear staining (Blue). High pressure antigen retrieval performed with 0.01M Citrate Buffer (pH 6.0) prior to IF staining. Objective: 40x.



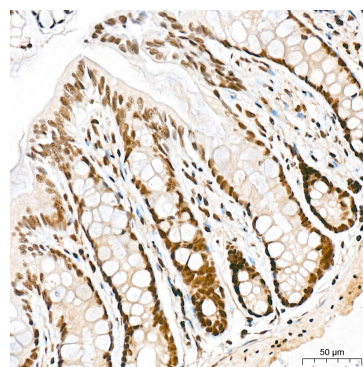
Immunohistochemistry analysis of paraffin-embedded Mouse testis tissue using Phospho-RPA2-Ser33 Rabbit mAb (AP1479) at a dilution of 1:800 (40x lens). High pressure antigen retrieval was performed with 0.01 M citrate buffer (pH 6.0) prior to IHC staining.



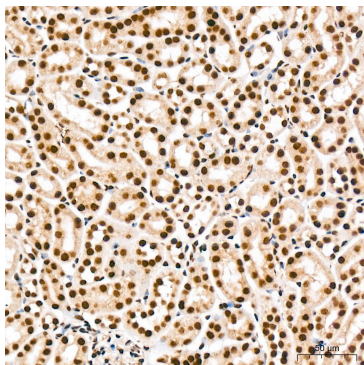
Immunohistochemistry analysis of paraffin-embedded Mouse brain tissue using Phospho-RPA2-Ser33 Rabbit mAb (AP1479) at a dilution of 1:800 (40x lens). High pressure antigen retrieval was performed with 0.01 M citrate buffer (pH 6.0) prior to IHC staining.



Immunohistochemistry analysis of paraffin-embedded Mouse colon tissue using Phospho-RPA2-Ser33 Rabbit mAb (AP1479) at a dilution of 1:800 (40x lens). High pressure antigen retrieval was performed with 0.01 M citrate buffer (pH 6.0) prior to IHC staining.



Immunohistochemistry analysis of paraffin-embedded Rat colon tissue using Phospho-RPA2-Ser33 Rabbit mAb (AP1479) at a dilution of 1:800 (40x lens). High pressure antigen retrieval was performed with 0.01 M citrate buffer (pH 6.0) prior to IHC staining.



Immunohistochemistry analysis of paraffin-embedded Mouse kidney tissue using Phospho-RPA2-Ser33 Rabbit mAb (AP1479) at a dilution of 1:800 (40x lens). High pressure antigen retrieval was performed with 0.01 M citrate buffer (pH 6.0) prior to IHC staining.