

Phospho-PI3 Kinase p55-Y199 Rabbit mAb

Catalog No.: AP1463 **Recombinant**

Basic Information

Observed MW

62kDa

Calculated MW

55kDa

Category

Primary antibody

Applications

ELISA, WB, IF/ICC

Cross-Reactivity

Mouse

CloneNo number

ARC65199

Background

Phosphatidylinositol 3-kinase phosphorylates the inositol ring of phosphatidylinositol at the 3-prime position. The enzyme comprises a 110 kD catalytic subunit and a regulatory subunit of either 85, 55, or 50 kD. This gene encodes the 85 kD regulatory subunit.

Phosphatidylinositol 3-kinase plays an important role in the metabolic actions of insulin, and a mutation in this gene has been associated with insulin resistance. Alternative splicing of this gene results in four transcript variants encoding different isoforms.

Recommended Dilutions

WB 1:2000 - 1:6000

IF/ICC 1:50 - 1:200

Immunogen Information

Gene ID

8503

Swiss Prot

Q92569

Immunogen

A synthetic phosphorylated peptide around Y199 of human PI3 Kinase p55
NP_001107644.1.

Synonyms

PIK3R3; Phospho-PI3KP55γ-Y199

Contact

☎ | 400-999-6126

✉ | cn.market@abclonal.com.cn

🌐 | www.abclonal.com.cn

Product Information

Source

Rabbit

Isotype

IgG

Purification

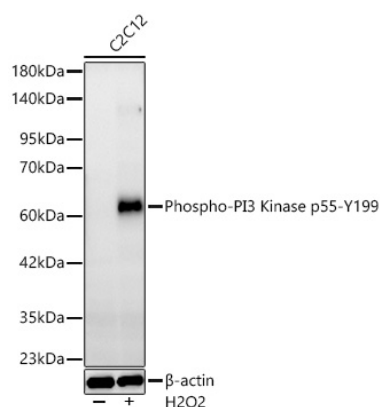
Affinity purification

Storage

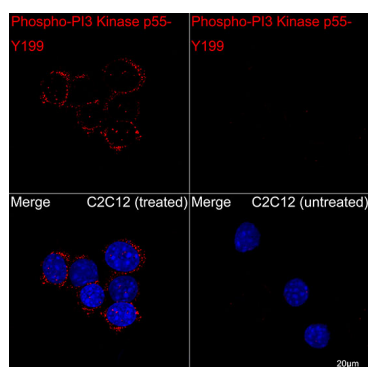
Store at -20°C. Avoid freeze / thaw cycles.

Buffer: PBS with 0.05% proclin300, 0.05% BSA, 50% glycerol, pH7.3.

Validation Data



Western blot analysis of lysates from C2C12 cells using Phospho-PI3 Kinase p55-Y199 Rabbit mAb (AP1463) at 1:5000 dilution. C2C12 cells were treated by Hydrogen Peroxide (2 nM) at 37°C for 15 minutes after serum-starvation overnight. Secondary antibody: HRP Goat Anti-Rabbit IgG (H+L) (AS014) at 1:10000 dilution. Lysates/proteins: 25 µg per lane. Blocking buffer: 3% nonfat dry milk in TBST. Detection: ECL Basic Kit (RM00020). Exposure time: 60s.



Confocal imaging of C2C12 cells (treated with H₂O₂) and C2C12 (untreated) cells using Phospho-PI3 Kinase p55-Y199 Rabbit mAb (AP1463, dilution 1:200) followed by a further incubation with Cy3 Goat Anti-Rabbit IgG (H+L) (AS007, dilution 1:500) (Red). DAPI was used for nuclear staining (Blue). Objective: 100x.