

# Phospho-SMAD9-Y129 Rabbit mAb

Catalog No.: AP1454 **Recombinant**

## Basic Information

### Observed MW

65kDa

### Calculated MW

48kDa/52kDa

### Category

Primary antibody

### Applications

WB,IF-P,ELISA

### Cross-Reactivity

Human, Mouse

### CloneNo number

ARC65069

## Background

Smads protein family: According to its structure, Smad proteins are divided into three subfamilies: R-Smad, Co Smad, and I-Smad, denoted by Smad 1-9, and classified into three functional categories: receptor activated or pathway restricted Smad (R-Smads), common pathway type Smad (Co Smad), and inhibitory Smad (I-Smads). R-Smads can be activated by type I receptors and form transient complexes with them, which can be further divided into two categories: activin TGF- $\beta$  Activated AR Smads, including Smad 2, Smad 3: and BR Smads activated by BMP, including Smad 1, Smad 5, Smad 8, or Smad 9. Co Smad includes Smad4, which is TGF- $\beta$  Media commonly needed in various signaling processes within the family. I-Smads include Smad 6 and Smad 7, which can bind to activated type I receptors and inhibit or regulate TGF- $\beta$  Signal transduction in the family.

## Recommended Dilutions

**WB** 1:500 - 1:1000

**IF-P** 1:50 - 1:200

**ELISA** Recommended starting concentration is 1  $\mu$ g/mL. Please optimize the concentration based on your specific assay requirements.

## Immunogen Information

### Gene ID

4093

### Swiss Prot

O15198

### Immunogen

Synthetic peptide. This information is considered to be commercially sensitive.

### Synonyms

SMAD9; SMAD8; Phospho-SMAD9-Y129

## Contact

☎ | 400-999-6126

✉ | [cn.market@abclonal.com.cn](mailto:cn.market@abclonal.com.cn)

🌐 | [www.abclonal.com.cn](http://www.abclonal.com.cn)

## Product Information

### Source

Rabbit

### Isotype

IgG

### Purification

Affinity purification

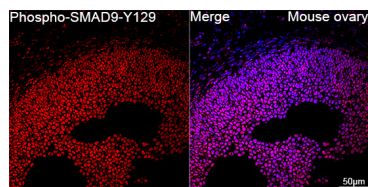
### Storage

Store at -20°C. Avoid freeze / thaw cycles.

Buffer: PBS with 0.02% sodium azide,50% glycerol,pH7.3.

## Validation Data

---



Confocal imaging of paraffin-embedded Mouse ovary using Phospho-SMAD9-Y129 Rabbit mAb (AP1454,dilution 1:200) followed by a further incubation with ABflo® 488-conjugated Goat Anti-Rabbit IgG (H+L)(AS073,dilution 1:500)(Red).DAPI was used for nuclear staining (Blue). Objective: 40x. Perform high pressure antigen retrieval with 0.01 M citrate buffer (pH 6.0) prior to IF staining.