

# Phospho-FAK-Y397 Rabbit mAb

Catalog No.: AP1447 **Recombinant** **7 Publications**

## Basic Information

### Observed MW

125kDa

### Calculated MW

119kDa

### Category

Primary antibody

### Applications

WB, ELISA

### Cross-Reactivity

Human

### CloneNo number

ARC62271

## Background

This gene encodes a cytoplasmic protein tyrosine kinase which is found concentrated in the focal adhesions that form between cells growing in the presence of extracellular matrix constituents. The encoded protein is a member of the FAK subfamily of protein tyrosine kinases but lacks significant sequence similarity to kinases from other subfamilies. Activation of this gene may be an important early step in cell growth and intracellular signal transduction pathways triggered in response to certain neural peptides or to cell interactions with the extracellular matrix. Several transcript variants encoding different isoforms have been found for this gene.

## Recommended Dilutions

**WB** 1:2000 - 1:4000

**ELISA** Recommended starting concentration is 1 µg/mL. Please optimize the concentration based on your specific assay requirements.

## Immunogen Information

### Gene ID

5747

### Swiss Prot

Q05397

### Immunogen

Synthetic peptide. This information is considered to be commercially sensitive.

### Synonyms

FAK; FADK; FAK1; FRNK; FADK 1; PPP1R71; p125FAK; pp125FAK; Phospho-FAK-Y397

## Contact

☎ | 400-999-6126

✉ | [cn.market@abclonal.com.cn](mailto:cn.market@abclonal.com.cn)

🌐 | [www.abclonal.com.cn](http://www.abclonal.com.cn)

## Product Information

### Source

Rabbit

### Isotype

IgG

### Purification

Affinity purification

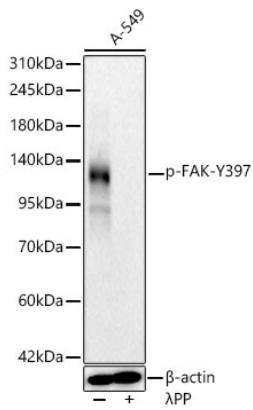
### Storage

Store at -20°C. Avoid freeze / thaw cycles.

Buffer: PBS containing 50% glycerol and 0.05% BSA, preserved with proclin300 or sodium azide (as specified on the Certificate of Analysis), pH 7.3.

## Validation Data

---



Western blot analysis of lysates from A-549 cells, using Phospho-FAK-Y397 Rabbit mAb (AP1447) at 1:4000 dilution. A-549 cells were treated by  $\lambda$ -PP mixed solution (1ul) at 30°C for 30 minutes. Secondary antibody: HRP-conjugated Goat anti-Rabbit IgG (H+L) (AS014) at 1:10000 dilution. Lysates/proteins: 25 $\mu$ g per lane. Blocking buffer: 3% nonfat dry milk in TBST. Detection: ECL Basic Kit (RM00020). Exposure time: 30s.