

Phospho-IRE1-S724 Rabbit mAb

Catalog No.: AP1442 **Recombinant** **3 Publications**

Basic Information

Observed MW

130kDa

Calculated MW

110kDa

Category

Primary antibody

Applications

WB, IHC-P, IF/ICC, ELISA

Cross-Reactivity

Human, Mouse, Rat

CloneNo number

ARC62282

Background

This gene encodes the transmembrane protein kinase inositol-requiring enzyme 1. The encoded protein contains two functional catalytic domains, a serine/threonine-protein kinase domain and an endoribonuclease domain. This protein functions as a sensor of unfolded proteins in the endoplasmic reticulum (ER) and triggers an intracellular signaling pathway termed the unfolded protein response (UPR). The UPR is an ER stress response that is conserved from yeast to mammals and activates genes involved in degrading misfolded proteins, regulating protein synthesis and activating molecular chaperones. This protein specifically mediates the splicing and activation of the stress response transcription factor X-box binding protein 1.

Recommended Dilutions

WB 1:1000 - 1:5000**IHC-P** 1:500 - 1:2000**IF/ICC** 1:50 - 1:200**ELISA** Recommended starting concentration is 1 µg/mL. Please optimize the concentration based on your specific assay requirements.

Immunogen Information

Gene ID

2081

Swiss Prot

O75460

Immunogen

Synthetic peptide. This information is considered to be commercially sensitive.

Synonyms

IRE1; IRE1P; IRE1a; hIRE1p; Phospho-IRE1-S724

Contact

 | 400-999-6126 | cn.market@abclonal.com.cn | www.abclonal.com.cn

Product Information

Source

Rabbit

Isotype

IgG

Purification

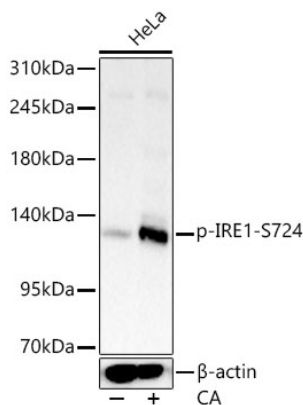
Affinity purification

Storage

Store at -20°C. Avoid freeze / thaw cycles.

Buffer: PBS containing 50% glycerol and 0.05% BSA, preserved with proclin300 or sodium azide (as specified on the Certificate of Analysis), pH 7.3.

Validation Data



Western blot analysis of lysates from HeLa cells, using Phospho-IRE1-S724 Rabbit mAb (AP1442) at 1:3000 dilution. HeLa cells were treated with Calyculin A (100 nM) at 37°C for 30 minutes after serum-starvation overnight.

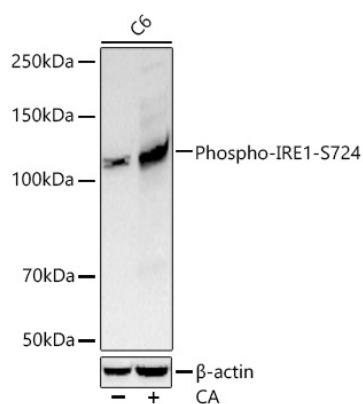
Secondary antibody: HRP-conjugated Goat anti-Rabbit IgG (H+L) (AS014) at 1:10000 dilution.

Lysates/proteins: 25µg per lane.

Blocking buffer: 3% nonfat dry milk in TBST.

Detection: ECL Basic Kit (RM00020).

Exposure time: 1s.



Western blot analysis of lysates from C6 cells using Phospho-IRE1-S724 Rabbit mAb (AP1442) at 1:3000 dilution incubated overnight at 4°C. C6 cells were treated with CA (100 nM) at 37°C for 30 minutes after serum-starvation overnight.

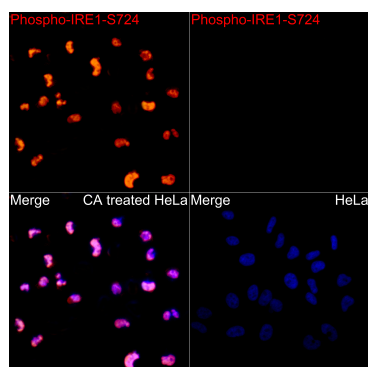
Secondary antibody: HRP-conjugated Goat anti-Rabbit IgG (H+L) (AS014) at 1:10000 dilution.

Lysates/proteins: 30 µg per lane.

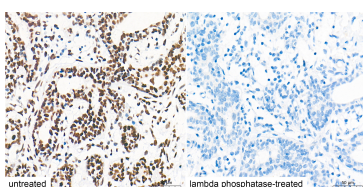
Blocking buffer: 3 % nonfat dry milk in TBST.

Detection: ECL Basic Kit (RM00020).

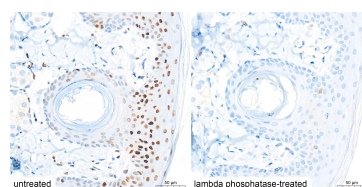
Exposure time: 10s.



Immunofluorescence analysis of HeLa treated with CA and HeLa cells using Phospho-IRE1-S724 Rabbit mAb (AP1442) at dilution of 1:200 (40x lens). Secondary antibody: Cy3-conjugated Goat anti-Rabbit IgG (H+L) (AS007) at 1:500 dilution. Blue: DAPI for nuclear staining.

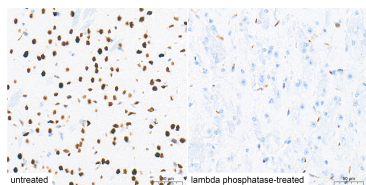


Immunohistochemistry analysis of paraffin-embedded Human breast cancer tissue, untreated(left) and lambda phosphatase-treated(right), using Phospho-IRE1-S724 Rabbit mAb (AP1442) at a dilution of 1:500 (40x lens). High pressure antigen retrieval performed with 0.01M Tris-EDTA Buffer (pH 9.0) prior to IHC staining.

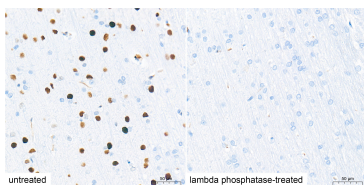


Immunohistochemistry analysis of paraffin-embedded Rat skin tissue, untreated(left) and lambda phosphatase-treated(right), using Phospho-IRE1-S724 Rabbit mAb (AP1442) at a dilution of 1:500 (40x lens). High pressure antigen retrieval performed with 0.01M Tris-EDTA Buffer (pH 9.0) prior to IHC staining.

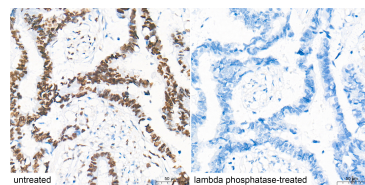
Validation Data



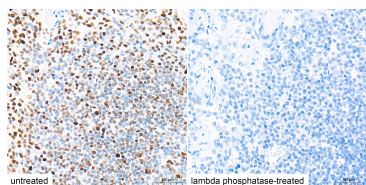
Immunohistochemistry analysis of paraffin-embedded Mouse brain tissue, untreated(left) and lambda phosphatase-treated(right), using Phospho-IRE1-S724 Rabbit mAb (AP1442) at a dilution of 1:500 (40x lens). High pressure antigen retrieval performed with 0.01M Tris-EDTA Buffer (pH 9.0) prior to IHC staining.



Immunohistochemistry analysis of paraffin-embedded Rat brain tissue, untreated(left) and lambda phosphatase-treated(right), using Phospho-IRE1-S724 Rabbit mAb (AP1442) at a dilution of 1:500 (40x lens). High pressure antigen retrieval performed with 0.01M Tris-EDTA Buffer (pH 9.0) prior to IHC staining.



Immunohistochemistry analysis of paraffin-embedded Human colon carcinoma tissue, untreated(left) and lambda phosphatase-treated(right), using Phospho-IRE1-S724 Rabbit mAb (AP1442) at a dilution of 1:500 (40x lens). High pressure antigen retrieval performed with 0.01M Tris-EDTA Buffer (pH 9.0) prior to IHC staining.



Immunohistochemistry analysis of paraffin-embedded Human tonsil tissue, untreated(left) and lambda phosphatase-treated(right), using Phospho-IRE1-S724 Rabbit mAb (AP1442) at a dilution of 1:500 (40x lens). High pressure antigen retrieval performed with 0.01M Tris-EDTA Buffer (pH 9.0) prior to IHC staining.