

Phospho-HSL-S660 Rabbit mAb

Catalog No.: AP1432 **Recombinant**

Basic Information

Observed MW

84kDa

Calculated MW

117kDa

Category

Primary antibody

Applications

ELISA, WB

Cross-Reactivity

Mouse

CloneNo number

ARC61254

Background

The protein encoded by this gene has a long and a short form, generated by use of alternative translational start codons. The long form is expressed in steroidogenic tissues such as testis, where it converts cholesteryl esters to free cholesterol for steroid hormone production. The short form is expressed in adipose tissue, among others, where it hydrolyzes stored triglycerides to free fatty acids.

Recommended Dilutions

WB 1:500 - 1:1000

Immunogen Information

Gene ID

3991

Swiss Prot

Q05469

Immunogen

A synthesized peptide derived from human HSL (Phospho-Ser660)

Synonyms

HSL; LHS; REH; AOMS4; FPLD6; Phospho-HSL-S660

Contact

☎ | 400-999-6126

✉ | cn.market@abclonal.com.cn

🌐 | www.abclonal.com.cn

Product Information

Source

Rabbit

Isotype

IgG

Purification

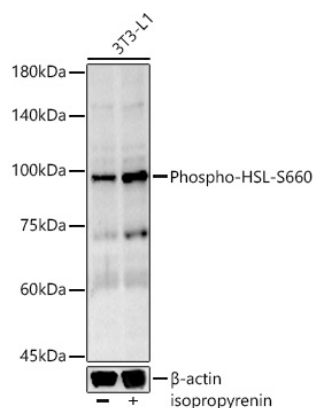
Affinity purification

Storage

Store at -20°C. Avoid freeze / thaw cycles.

Buffer: PBS with 0.05% proclin300, 0.05% BSA, 50% glycerol, pH7.3.

Validation Data



Western blot analysis of 3T3-L1 cells, using Phospho-HSL-S660 Rabbit mAb (AP1432) at 1:1000 dilution. 3T3-L1 cells that were not differentiated or differentiated into adipocytes treated with 0.06mol/L alcohol and treated with isoproterenol (10 μ M, 20 min).
Secondary antibody: HRP Goat Anti-Rabbit IgG (H+L) (AS014) at 1:10000 dilution.
Lysates/proteins: 25 μ g per lane.
Blocking buffer: 3% nonfat dry milk in TBST.
Detection: ECL Basic Kit (RM00020).
Exposure time: 180s.